

Acta Crystallographica Section E

Structure Reports

Online

ISSN 1600-5368

Bis[benzyl *N'*-(1*H*-indol-3-ylmethylene)-hydrazinecarbodithioato- κ^2 *N',S*]-nickel(II) *N,N*-dimethylformamide disolvate

Hamid Khaledi, Hapipah Mohd Ali and Seik Weng Ng*

 Department of Chemistry, University of Malaya, 50603 Kuala Lumpur, Malaysia
 Correspondence e-mail: seikweng@um.edu.my

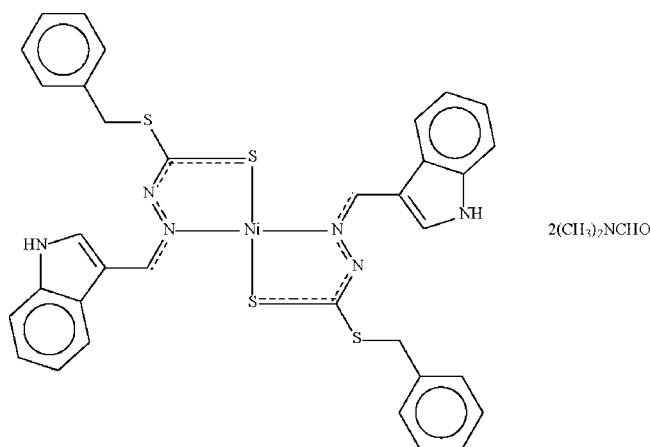
Received 15 November 2008; accepted 19 November 2008

 Key indicators: single-crystal X-ray study; $T = 100$ K; mean $\sigma(\text{C}-\text{C}) = 0.004$ Å; R factor = 0.040; wR factor = 0.094; data-to-parameter ratio = 13.8.

In the title compound, $[\text{Ni}(\text{C}_{17}\text{H}_{14}\text{N}_3\text{S}_2)_2] \cdot 2\text{C}_3\text{H}_7\text{NO}$, the Ni atom (site symmetry $\bar{1}$) is *N,S*-chelated by two deprotonated Schiff base anions in a distorted square-planar geometry. The dihedral angle between the aromatic ring planes within the ligand is $86.37(13)^\circ$. In the crystal structure, an $\text{N}-\text{H} \cdots \text{O}$ hydrogen bond links the complex to the dimethylformamide solvent molecule.

Related literature

For other square-planar nickel dithiocarbazates, see: Ali *et al.* (2000); Tian *et al.* (1996*a,b*); Xue *et al.* (2003); Zhang *et al.* (2004); Zhu *et al.* (2000).



Experimental

Crystal data

 $[\text{Ni}(\text{C}_{17}\text{H}_{14}\text{N}_3\text{S}_2)_2] \cdot 2\text{C}_3\text{H}_7\text{NO}$
 $M_r = 853.77$

 Monoclinic, $P2_1/c$
 $a = 10.3808(3)$ Å
 $b = 20.0219(7)$ Å
 $c = 10.7831(3)$ Å
 $\beta = 117.921(2)^\circ$
 $V = 1980.3(1)$ Å³
 $Z = 2$
 Mo $K\alpha$ radiation
 $\mu = 0.75$ mm⁻¹
 $T = 100(2)$ K
 $0.12 \times 0.12 \times 0.06$ mm

Data collection

 Bruker SMART APEX CCD
 diffractometer
 Absorption correction: multi-scan
 (*SADABS*; Sheldrick, 1996)
 $T_{\min} = 0.916$, $T_{\max} = 0.957$

 13342 measured reflections
 3481 independent reflections
 2615 reflections with $I > 2\sigma(I)$
 $R_{\text{int}} = 0.062$

Refinement

 $R[F^2 > 2\sigma(F^2)] = 0.040$
 $wR(F^2) = 0.094$
 $S = 1.03$
 3481 reflections

 252 parameters
 H-atom parameters constrained
 $\Delta\rho_{\text{max}} = 0.50$ e Å⁻³
 $\Delta\rho_{\text{min}} = -0.29$ e Å⁻³

Table 1

Selected bond lengths (Å).

Ni1—N2	1.916 (2)	Ni1—S1	2.1770 (7)
--------	-----------	--------	------------

Data collection: *APEX2* (Bruker, 2007); cell refinement: *SAINT* (Bruker, 2007); data reduction: *SAINT*; program(s) used to solve structure: *SHELXS97* (Sheldrick, 2008); program(s) used to refine structure: *SHELXL97* (Sheldrick, 2008); molecular graphics: *X-SEED* (Barbour, 2001); software used to prepare material for publication: *pubCIF* (Westrip, 2008).

We thank the University of Malaya for funding this study (Science Fund grants 12-02-03-2031, 12-02-03-2051).

Supplementary data and figures for this paper are available from the IUCr electronic archives (Reference: HB2849).

References

- Ali, M. A., Mirza, A., Butcher, R. J. & Rahman, M. (2000). *Transition Met. Chem.* **25**, 430–436.
- Barbour, L. J. (2001). *J. Supramol. Chem.* **1**, 189–191.
- Bruker (2007). *APEX2* and *SAINT*. Bruker AXS Inc., Madison, Wisconsin, USA.
- Sheldrick, G. M. (1996). *SADABS*. University of Göttingen, Germany.
- Sheldrick, G. M. (2008). *Acta Cryst.* **A64**, 112–122.
- Tian, Y.-P., Duan, C.-Y., Lu, Z.-L., You, X.-Z., Fun, H.-K. & Kandasamy, S. (1996*a*). *Polyhedron*, **15**, 2263–2271.
- Tian, Y.-P., Duan, C.-Y., Lu, Z.-L., You, X.-Z. & Huang, X.-Y. (1996*b*). *J. Coord. Chem.* **38**, 219–226.
- Westrip, S. P. (2008). *pubCIF*. In preparation.
- Xue, Z.-M., Zhang, X.-J., Tian, Y.-P., Wu, J.-Y., Jiang, M.-H. & Fun, H.-K. (2003). *Chin. J. Struct. Chem.* **22**, 265–269.
- Zhang, M.-L., Tian, Y.-P., Zhang, X.-J., Wu, J.-Y., Zhang, S.-Y., Wang, D., Jiang, M.-H., Chantropromma, S. & Fun, H.-K. (2004). *Transition Met. Chem.* **29**, 596–602.
- Zhu, X.-H., Chen, X.-F., Zhang, Y., You, X.-Z., Tan, W.-L., Ji, W., Vittal, J. J., Tan, G.-K. & Kennard, C. H. L. (2000). *New J. Chem.* **24**, 419–423.

supplementary materials

Acta Cryst. (2008). E64, m1615 [doi:10.1107/S1600536808038580]

Bis[benzyl *N'*-(1*H*-indol-3-ylmethylene)hydrazinecarbodithioato- κ^2 *N',S*]nickel(II) *N,N*-dimethylformamide disolvate

H. Khaledi, H. Mohd Ali and S. W. Ng

Comment

For related structures, see: Ali *et al.* (2000); Tian *et al.* (1996*a,b*); Xue *et al.* (2003); Zhang *et al.* (2004); Zhu *et al.* (2000).

Experimental

Benzyl (1*H*-indol-2-ylmethylene)hydrazinecarbodithioate ethanol hemisolvate (2 mmol, 0.65 g) was dissolved in ethanol (30 ml) along with several drops of triethylamine. To the resulting clear solution was added an ethanol solution (10 ml) containing 1 mmol (0.25 g) of nickel acetate tetrahydrate. The mixture was heated for an hour. The product that separated was recrystallized from DMF to yield brown blocks of (I).

Refinement

Hydrogen atoms were placed at calculated positions (C–H = 0.95–0.99 Å, N–H = 0.88 Å) and refined as riding with $U(\text{H}) = 1.2\text{--}1.5$ times $U_{\text{eq}}(\text{C}, \text{N})$.

Figures

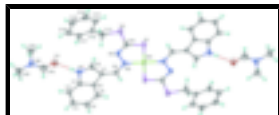


Fig. 1. View of (I) at the 70% probability level. Hydrogen atoms are drawn as spheres of arbitrary radius. The unlabelled atoms are generated by the symmetry operation (1–*x*, 1–*y*, 1–*z*) and the hydrogen bonds are shown as dashed lines.

Bis[benzyl *N'*-(1*H*-indol-3-ylmethylene)hydrazinecarbodithioato- κ^2 *N',S*]nickel(II) *N,N*-dimethylformamide disolvate

Crystal data

[Ni(C₁₇H₁₄N₃S₂)₂]:2C₃H₇NO

$M_r = 853.77$

Monoclinic, $P2_1/c$

Hall symbol: -P 2ybc

$a = 10.3808$ (3) Å

$b = 20.0219$ (7) Å

$c = 10.7831$ (3) Å

$\beta = 117.921$ (2)°

$V = 1980.3$ (1) Å³

$F_{000} = 892$

$D_x = 1.432$ Mg m⁻³

Mo $K\alpha$ radiation

$\lambda = 0.71073$ Å

Cell parameters from 1450 reflections

$\theta = 2.2\text{--}22.7^\circ$

$\mu = 0.75$ mm⁻¹

$T = 100$ (2) K

Block, brown

0.12 × 0.12 × 0.06 mm

supplementary materials

$Z = 2$

Data collection

Bruker SMART APEX CCD diffractometer	3481 independent reflections
Radiation source: fine-focus sealed tube	2615 reflections with $I > 2\sigma(I)$
Monochromator: graphite	$R_{\text{int}} = 0.062$
$T = 100(2)$ K	$\theta_{\text{max}} = 25.0^\circ$
ω scans	$\theta_{\text{min}} = 2.0^\circ$
Absorption correction: Multi-scan (SADABS; Sheldrick, 1996)	$h = -12 \rightarrow 12$
$T_{\text{min}} = 0.916$, $T_{\text{max}} = 0.957$	$k = -23 \rightarrow 23$
13342 measured reflections	$l = -12 \rightarrow 12$

Refinement

Refinement on F^2	Secondary atom site location: difference Fourier map
Least-squares matrix: full	Hydrogen site location: inferred from neighbouring sites
$R[F^2 > 2\sigma(F^2)] = 0.040$	H-atom parameters constrained
$wR(F^2) = 0.094$	$w = 1/[\sigma^2(F_o^2) + (0.0396P)^2 + 0.2888P]$
$S = 1.03$	where $P = (F_o^2 + 2F_c^2)/3$
3481 reflections	$(\Delta/\sigma)_{\text{max}} = 0.001$
252 parameters	$\Delta\rho_{\text{max}} = 0.50 \text{ e } \text{\AA}^{-3}$
Primary atom site location: structure-invariant direct methods	$\Delta\rho_{\text{min}} = -0.29 \text{ e } \text{\AA}^{-3}$
	Extinction correction: none

Fractional atomic coordinates and isotropic or equivalent isotropic displacement parameters (\AA^2)

	x	y	z	$U_{\text{iso}}^*/U_{\text{eq}}$
Ni1	0.5000	0.5000	0.5000	0.01710 (15)
S1	0.48640 (8)	0.60841 (4)	0.48343 (8)	0.0236 (2)
S2	0.38426 (8)	0.70431 (4)	0.62163 (8)	0.0234 (2)
O1	0.1755 (3)	0.56685 (12)	1.1091 (2)	0.0472 (7)
N1	0.2818 (3)	0.49406 (11)	0.9618 (2)	0.0220 (6)
H1	0.2520	0.5191	1.0105	0.026*
N2	0.4331 (2)	0.51020 (11)	0.6371 (2)	0.0182 (5)
N3	0.3953 (2)	0.57357 (11)	0.6685 (2)	0.0192 (5)
N4	0.0849 (3)	0.57529 (12)	1.2634 (2)	0.0252 (6)
C1	0.2942 (3)	0.42563 (14)	0.9707 (3)	0.0192 (6)
C2	0.2658 (3)	0.38131 (15)	1.0548 (3)	0.0232 (7)
H2	0.2351	0.3967	1.1200	0.028*
C3	0.2842 (3)	0.31463 (15)	1.0393 (3)	0.0260 (7)
H3	0.2647	0.2832	1.0945	0.031*
C4	0.3308 (3)	0.29162 (15)	0.9445 (3)	0.0250 (7)
H4	0.3412	0.2450	0.9354	0.030*

C5	0.3621 (3)	0.33626 (15)	0.8636 (3)	0.0219 (7)
H5	0.3955	0.3205	0.8005	0.026*
C6	0.3437 (3)	0.40438 (14)	0.8763 (3)	0.0187 (6)
C7	0.3625 (3)	0.46401 (14)	0.8099 (3)	0.0188 (6)
C8	0.3220 (3)	0.51697 (15)	0.8678 (3)	0.0223 (7)
H8	0.3227	0.5627	0.8443	0.027*
C9	0.4138 (3)	0.46239 (15)	0.7091 (3)	0.0198 (7)
H9	0.4382	0.4191	0.6907	0.024*
C10	0.4193 (3)	0.62076 (14)	0.6009 (3)	0.0191 (6)
C11	0.3353 (3)	0.70343 (15)	0.7620 (3)	0.0245 (7)
H11A	0.4028	0.6726	0.8354	0.029*
H11B	0.3535	0.7487	0.8039	0.029*
C12	0.1817 (3)	0.68378 (14)	0.7277 (3)	0.0206 (7)
C13	0.0673 (3)	0.68232 (15)	0.5927 (3)	0.0259 (7)
H13	0.0838	0.6939	0.5159	0.031*
C14	-0.0716 (3)	0.66398 (16)	0.5687 (3)	0.0309 (8)
H14	-0.1490	0.6622	0.4754	0.037*
C15	-0.0977 (3)	0.64846 (16)	0.6793 (3)	0.0320 (8)
H15	-0.1930	0.6364	0.6627	0.038*
C16	0.0152 (3)	0.65049 (15)	0.8139 (3)	0.0291 (8)
H16	-0.0020	0.6398	0.8908	0.035*
C17	0.1540 (3)	0.66816 (15)	0.8379 (3)	0.0243 (7)
H17	0.2312	0.6696	0.9313	0.029*
C18	0.1381 (4)	0.54196 (18)	1.1919 (3)	0.0376 (9)
H18	0.1485	0.4950	1.2054	0.045*
C19	0.0701 (3)	0.64730 (15)	1.2501 (3)	0.0289 (8)
H19A	0.0755	0.6616	1.1658	0.043*
H19B	0.1489	0.6684	1.3329	0.043*
H19C	-0.0241	0.6606	1.2427	0.043*
C20	0.0490 (3)	0.54232 (15)	1.3634 (3)	0.0293 (7)
H20A	0.0590	0.4939	1.3579	0.044*
H20B	-0.0516	0.5531	1.3412	0.044*
H20C	0.1154	0.5578	1.4584	0.044*

Atomic displacement parameters (\AA^2)

	U^{11}	U^{22}	U^{33}	U^{12}	U^{13}	U^{23}
Ni1	0.0178 (3)	0.0178 (3)	0.0192 (3)	-0.0001 (2)	0.0116 (2)	-0.0001 (2)
S1	0.0326 (5)	0.0197 (4)	0.0292 (4)	0.0005 (3)	0.0234 (4)	0.0002 (3)
S2	0.0297 (5)	0.0183 (4)	0.0296 (4)	-0.0010 (3)	0.0201 (4)	-0.0016 (3)
O1	0.0752 (19)	0.0443 (17)	0.0405 (14)	0.0204 (13)	0.0424 (14)	0.0058 (12)
N1	0.0274 (14)	0.0212 (15)	0.0242 (13)	-0.0007 (11)	0.0178 (11)	-0.0028 (11)
N2	0.0186 (13)	0.0152 (14)	0.0220 (12)	0.0001 (10)	0.0106 (10)	-0.0005 (10)
N3	0.0197 (13)	0.0175 (14)	0.0223 (13)	0.0009 (10)	0.0114 (11)	-0.0031 (10)
N4	0.0265 (15)	0.0263 (16)	0.0239 (13)	0.0015 (11)	0.0129 (12)	-0.0056 (11)
C1	0.0192 (16)	0.0213 (17)	0.0180 (14)	-0.0012 (13)	0.0094 (12)	0.0003 (12)
C2	0.0225 (17)	0.0289 (19)	0.0212 (15)	-0.0016 (14)	0.0128 (13)	0.0023 (13)
C3	0.0232 (17)	0.030 (2)	0.0264 (16)	0.0009 (14)	0.0128 (14)	0.0100 (14)

supplementary materials

C4	0.0229 (17)	0.0197 (17)	0.0319 (17)	0.0021 (13)	0.0123 (14)	0.0079 (13)
C5	0.0188 (16)	0.0253 (18)	0.0229 (15)	0.0023 (13)	0.0110 (13)	0.0003 (13)
C6	0.0129 (15)	0.0237 (18)	0.0205 (15)	0.0019 (12)	0.0088 (12)	0.0023 (12)
C7	0.0172 (16)	0.0200 (17)	0.0203 (15)	-0.0010 (12)	0.0098 (13)	-0.0001 (12)
C8	0.0243 (17)	0.0242 (18)	0.0217 (15)	-0.0019 (13)	0.0134 (13)	0.0033 (12)
C9	0.0172 (16)	0.0201 (18)	0.0237 (16)	0.0008 (12)	0.0107 (13)	-0.0002 (12)
C10	0.0162 (16)	0.0222 (17)	0.0183 (14)	-0.0012 (12)	0.0076 (12)	-0.0008 (12)
C11	0.0304 (18)	0.0232 (18)	0.0263 (16)	-0.0054 (14)	0.0186 (14)	-0.0074 (13)
C12	0.0251 (17)	0.0148 (16)	0.0282 (16)	0.0002 (13)	0.0177 (14)	-0.0055 (12)
C13	0.0301 (19)	0.0247 (18)	0.0265 (17)	0.0025 (14)	0.0164 (15)	-0.0007 (13)
C14	0.0224 (18)	0.032 (2)	0.0314 (18)	0.0053 (14)	0.0071 (15)	-0.0008 (15)
C15	0.0232 (18)	0.031 (2)	0.044 (2)	0.0045 (14)	0.0177 (16)	0.0048 (15)
C16	0.0322 (19)	0.0273 (19)	0.0366 (19)	0.0018 (14)	0.0234 (16)	0.0042 (14)
C17	0.0246 (18)	0.0256 (18)	0.0264 (16)	-0.0007 (14)	0.0150 (14)	-0.0043 (13)
C18	0.048 (2)	0.034 (2)	0.0333 (19)	0.0081 (17)	0.0206 (18)	-0.0021 (16)
C19	0.034 (2)	0.028 (2)	0.0260 (17)	0.0037 (15)	0.0150 (15)	-0.0037 (14)
C20	0.0300 (18)	0.029 (2)	0.0324 (18)	-0.0026 (14)	0.0177 (15)	-0.0049 (14)

Geometric parameters (Å, °)

Ni1—N2 ⁱ	1.916 (2)	C6—C7	1.451 (4)
Ni1—N2	1.916 (2)	C7—C8	1.391 (4)
Ni1—S1	2.1770 (7)	C7—C9	1.418 (4)
Ni1—S1 ⁱ	2.1770 (7)	C8—H8	0.9500
S1—C10	1.725 (3)	C9—H9	0.9500
S2—C10	1.748 (3)	C11—C12	1.511 (4)
S2—C11	1.808 (3)	C11—H11A	0.9900
O1—C18	1.233 (4)	C11—H11B	0.9900
N1—C8	1.346 (3)	C12—C17	1.383 (4)
N1—C1	1.375 (3)	C12—C13	1.382 (4)
N1—H1	0.8800	C13—C14	1.390 (4)
N2—C9	1.306 (3)	C13—H13	0.9500
N2—N3	1.416 (3)	C14—C15	1.377 (4)
N3—C10	1.287 (3)	C14—H14	0.9500
N4—C18	1.321 (4)	C15—C16	1.375 (4)
N4—C20	1.454 (4)	C15—H15	0.9500
N4—C19	1.450 (4)	C16—C17	1.385 (4)
C1—C2	1.395 (4)	C16—H16	0.9500
C1—C6	1.404 (4)	C17—H17	0.9500
C2—C3	1.370 (4)	C18—H18	0.9500
C2—H2	0.9500	C19—H19A	0.9800
C3—C4	1.398 (4)	C19—H19B	0.9800
C3—H3	0.9500	C19—H19C	0.9800
C4—C5	1.390 (4)	C20—H20A	0.9800
C4—H4	0.9500	C20—H20B	0.9800
C5—C6	1.393 (4)	C20—H20C	0.9800
C5—H5	0.9500		
N2 ⁱ —Ni1—N2	180.0	C7—C9—H9	114.5

N2 ⁱ —Ni1—S1	94.36 (7)	N3—C10—S1	124.2 (2)
N2—Ni1—S1	85.64 (7)	N3—C10—S2	121.5 (2)
N2 ⁱ —Ni1—S1 ⁱ	85.64 (7)	S1—C10—S2	114.26 (16)
N2—Ni1—S1 ⁱ	94.36 (7)	C12—C11—S2	118.4 (2)
S1—Ni1—S1 ⁱ	180.0	C12—C11—H11A	107.7
C10—S1—Ni1	96.64 (10)	S2—C11—H11A	107.7
C10—S2—C11	104.76 (13)	C12—C11—H11B	107.7
C8—N1—C1	109.9 (2)	S2—C11—H11B	107.7
C8—N1—H1	125.1	H11A—C11—H11B	107.1
C1—N1—H1	125.1	C17—C12—C13	118.5 (3)
C9—N2—N3	112.2 (2)	C17—C12—C11	118.0 (2)
C9—N2—Ni1	126.4 (2)	C13—C12—C11	123.5 (3)
N3—N2—Ni1	121.46 (17)	C12—C13—C14	120.4 (3)
C10—N3—N2	111.9 (2)	C12—C13—H13	119.8
C18—N4—C20	121.8 (3)	C14—C13—H13	119.8
C18—N4—C19	119.9 (3)	C15—C14—C13	120.4 (3)
C20—N4—C19	118.2 (2)	C15—C14—H14	119.8
N1—C1—C2	129.6 (3)	C13—C14—H14	119.8
N1—C1—C6	107.8 (2)	C14—C15—C16	119.4 (3)
C2—C1—C6	122.6 (3)	C14—C15—H15	120.3
C3—C2—C1	117.2 (3)	C16—C15—H15	120.3
C3—C2—H2	121.4	C15—C16—C17	120.2 (3)
C1—C2—H2	121.4	C15—C16—H16	119.9
C2—C3—C4	121.7 (3)	C17—C16—H16	119.9
C2—C3—H3	119.2	C12—C17—C16	121.0 (3)
C4—C3—H3	119.2	C12—C17—H17	119.5
C5—C4—C3	120.7 (3)	C16—C17—H17	119.5
C5—C4—H4	119.7	O1—C18—N4	125.3 (3)
C3—C4—H4	119.7	O1—C18—H18	117.3
C4—C5—C6	119.0 (3)	N4—C18—H18	117.3
C4—C5—H5	120.5	N4—C19—H19A	109.5
C6—C5—H5	120.5	N4—C19—H19B	109.5
C5—C6—C1	118.8 (3)	H19A—C19—H19B	109.5
C5—C6—C7	134.5 (3)	N4—C19—H19C	109.5
C1—C6—C7	106.7 (2)	H19A—C19—H19C	109.5
C8—C7—C9	131.5 (3)	H19B—C19—H19C	109.5
C8—C7—C6	105.5 (2)	N4—C20—H20A	109.5
C9—C7—C6	123.0 (3)	N4—C20—H20B	109.5
N1—C8—C7	110.1 (3)	H20A—C20—H20B	109.5
N1—C8—H8	125.0	N4—C20—H20C	109.5
C7—C8—H8	125.0	H20A—C20—H20C	109.5
N2—C9—C7	131.1 (3)	H20B—C20—H20C	109.5
N2—C9—H9	114.5		
N2 ⁱ —Ni1—S1—C10	177.84 (11)	C9—C7—C8—N1	-179.2 (3)
N2—Ni1—S1—C10	-2.16 (11)	C6—C7—C8—N1	0.2 (3)
S1—Ni1—N2—C9	-177.9 (2)	N3—N2—C9—C7	0.1 (4)
S1 ⁱ —Ni1—N2—C9	2.1 (2)	Ni1—N2—C9—C7	-178.5 (2)

supplementary materials

S1—Ni1—N2—N3	3.52 (18)	C8—C7—C9—N2	-2.8 (5)
S1 ⁱ —Ni1—N2—N3	-176.48 (18)	C6—C7—C9—N2	177.9 (3)
C9—N2—N3—C10	177.8 (2)	N2—N3—C10—S1	1.1 (3)
Ni1—N2—N3—C10	-3.5 (3)	N2—N3—C10—S2	-179.25 (17)
C8—N1—C1—C2	179.3 (3)	Ni1—S1—C10—N3	1.2 (2)
C8—N1—C1—C6	-0.5 (3)	Ni1—S1—C10—S2	-178.47 (13)
N1—C1—C2—C3	178.4 (3)	C11—S2—C10—N3	6.4 (3)
C6—C1—C2—C3	-1.9 (4)	C11—S2—C10—S1	-173.95 (15)
C1—C2—C3—C4	0.7 (4)	C10—S2—C11—C12	-80.3 (2)
C2—C3—C4—C5	0.8 (4)	S2—C11—C12—C17	165.3 (2)
C3—C4—C5—C6	-1.2 (4)	S2—C11—C12—C13	-16.5 (4)
C4—C5—C6—C1	0.0 (4)	C17—C12—C13—C14	-1.5 (4)
C4—C5—C6—C7	-178.9 (3)	C11—C12—C13—C14	-179.7 (3)
N1—C1—C6—C5	-178.6 (2)	C12—C13—C14—C15	1.4 (5)
C2—C1—C6—C5	1.5 (4)	C13—C14—C15—C16	-0.7 (5)
N1—C1—C6—C7	0.6 (3)	C14—C15—C16—C17	0.1 (5)
C2—C1—C6—C7	-179.3 (3)	C13—C12—C17—C16	0.9 (4)
C5—C6—C7—C8	178.6 (3)	C11—C12—C17—C16	179.2 (3)
C1—C6—C7—C8	-0.5 (3)	C15—C16—C17—C12	-0.2 (5)
C5—C6—C7—C9	-2.0 (5)	C20—N4—C18—O1	-177.4 (3)
C1—C6—C7—C9	179.0 (2)	C19—N4—C18—O1	-1.6 (5)
C1—N1—C8—C7	0.2 (3)		

Symmetry codes: (i) $-x+1, -y+1, -z+1$.

Hydrogen-bond geometry ($\text{\AA}, ^\circ$)

<i>D</i> —H \cdots <i>A</i>	<i>D</i> —H	H \cdots <i>A</i>	<i>D</i> \cdots <i>A</i>	<i>D</i> —H \cdots <i>A</i>
N1—H1 \cdots O1	0.88	1.86	2.739 (3)	175

Fig. 1

