

# A New Parameterized Architectural Design for SENSE Reconstruction

Muhammad Faisal Siddiqui<sup>1</sup>, Ahmed Wasif Reza<sup>1</sup>, Jeevan Kanesan<sup>1</sup>, and Hammad Omer<sup>2</sup>

<sup>1</sup>Department of Electrical Engineering, Faculty of Engineering, University of Malaya, 50603 Kuala Lumpur, Malaysia

<sup>2</sup>Department of Electrical Engineering, COMSATS Institute of Information Technology, Islamabad, Pakistan

Corresponding addresses

wasif@um.edu.my

**Abstract:** Reconfigurable hardware based architectures that could provide good quality image reconstruction for parallel Magnetic Resonance Imaging (MRI) within very less computation time are in high demand. Hardware platforms for specific reconstruction algorithms dramatically increase the power efficiency and decrease the execution time. This research proposes a new parameterized architecture design for Sensitivity Encoding (SENSE) reconstruction. This architecture is also synthesized for Field Programmable Gate Array (FPGA). Complex multiplier, divider and complex matrix multiplier modules are designed to implement the algorithm. Furthermore, the variable data bus widths are used in the data path of the architecture, which leads to reduce the hardware cost and silicon area. Experimental results and comparisons prove the efficiency of the architecture. Moreover, in terms of computation time, the result shows that the proposed technique is 1000 times faster than the conventional MATLAB reconstruction, while maintaining the quality of the reconstructed image. The results indicate that this architectural design can prove to be a significant tool for SENSE reconstruction in MRI scanners.

**Keywords:** MRI, Parallel MRI, SENSE, FPGA, HDL.

## 1. Introduction

In recent years, magnetic resonance imaging (MRI) has seen a wide use by the medical practitioners, as an advanced imaging tool, to identify the pathological conditions of the patients. MRI has proven itself as a low risk, dominant and flexible assessment technique for medical examination over the years because of its features, like better soft tissue differentiation, high contrast and spatial resolution. Furthermore, MRI can detect certain diseases much earlier than other medical imaging techniques [1]. One major limitation of the current MRI is its long acquisition time, which challenges the use of MRI for some applications and also increases the hospitals' resource usage and power.

Parallel imaging (PI) has been one of the most renowned innovations in magnetic resonance (MR) field which enables to increase the speed of the MRI scans by acquiring the data in parallel. The use of multiple receiver coils in PI reduces the image acquisition time significantly. Parallel MRI reconstruction techniques have been the central focus of research in recent times. Many different solutions have been proposed by different researchers [2], which can be broadly categorized into 'image-domain' approaches (e.g., SENSE) and '*k*-space' approaches (e.g., GRAPPA). In this paper, Sensitivity Encoding (SENSE) [3] algorithm is used to design the hardware for PI reconstruction.

The quick development of MRI reconstruction algorithms

also demands the best possible solution for its implementation in hardware. These reconstruction algorithms are computationally intensive by nature, which consumes longer time and demands tremendous power. To satisfy such computation-hungry applications effectively, different platforms are used. These platforms may consist of computation cores, general purpose central processing unit (CPU), general purpose graphics processing unit (GPU), field programmable gate arrays (FPGAs), and combination of those [4-11]. Each technology has its advantages and limitations.

In this paper, a parameterized architectural design of SENSE algorithm for two receiver coils is presented. A parameterized design allows the designers to reconfigure the hardware data buses widths. The proposed architecture is developed using hardware descriptive language (HDL), Verilog. This synthesizable code can be implemented on FPGA. Application specific hardware designs for FPGA provide greater speed than a software implementation on the general purpose CPU and also dissipate less power at the cost of design efforts [7]. Furthermore, architectural designs on reconfigurable hardware offer to exploit parallelism in the algorithm which yields a significant reduction in computation time. To validate the proposed design efficiency, MATLAB Simulink/ModelSim co-simulation platform is used.

The rest of the paper is organized as follows. Section 2 presents an overview of SENSE reconstruction. Section 3 introduces the proposed architecture design for SENSE reconstruction algorithm. Experimental results and comparisons are discussed in Section 4. Finally, conclusions are drawn in Section 5.

## 2. SENSE Reconstruction Algorithm

SENSE is an image-domain reconstruction algorithm for parallel MRI. In this technique, sensitivity maps of the receiver coil elements are used to calculate the aliased signal component at each pixel and then these signals are allocated at actual pixel positions in the unwrapped image [2]. Mathematically, in matrix notation, SENSE algorithm can be defined as:

$$S = CM \quad (1)$$

where "*C*" is a sensitivity matrix (also called encoding matrix) which contains the information of coil sensitivities of each coil, "*M*" is the image to be reconstructed and "*S*" is

the aliased image captured by the MRI scanner. It becomes an inverse matrix problem and the solution of the unfolded image (desired MR image) “ $M$ ” is given by:

$$M = C^{-1}S \quad (2)$$

### 3. Hardware Implementation of SENSE

The importance of speed in medical instruments generates the requirement to develop application specific hardware for real-time image processing. Architecture designs achieve better performance; reducing the computation time of the scan, and decreasing the power consumption of the resources. Different hardware platforms or combination of different platforms are used to implement such reconstruction algorithms. Table 1 provides a comparison of some platforms, such as CPUs, GPUs and FPGAs.

**Table 1.** Comparison of CPU, GPU and FPGA

	<b>Peak (32/64bit) GFlops</b>	<b>Power (W)</b>	<b>Design Effort</b>
CPU (Core i7)	70/70	144	Easy
GPU (RV870)	560/2800	150	Middle
FPGA (Vertex-7)	160/628	7	Hard

Reconfigurable hardware (such as FPGA) based designs improve the performance space ratio at the cost of design efforts [7]. Furthermore, instead of spending heavy costs to provide a solution for any application, the parameterized architecture design for FPGA provides a platform for the researches to validate the design, enables rapid prototyping of complex algorithms and a chance to avail debugging procedures.

Parameterized architectural design of SENSE algorithm for two receiver coils with an acceleration factor of 2 is implemented in HDL, Verilog. Fixed point arithmetic is used to represent the decimal numbers in binary notation. Furthermore, complex numbers are saved in 32-bit real part and 32-bit imaginary part. However, the data widths can be changeable as the architecture is generalised by parameterization method.

To implement SENSE reconstruction of two coils with an acceleration factor of 2, following equations have to be solved for each aliased pixel in undersampled data (folded image) of  $128 \times 256 \times 2$  in hardware:

$$S_1(x, y) = C_1(x, y)M(x, y) + C_1(x, y + 128)M(x, y + 128) \quad (3)$$

$$S_2(x, y) = C_2(x, y)M(x, y) + C_2(x, y + 128)M(x, y + 128) \quad (4)$$

These equations of a linear system can be solved by taking the inverse of “ $C$ ” matrix and multiplying with matrix “ $S$ ”, which gives the resultant unfolded image “ $M$ ”. To solve this problem, a complex multiplier is needed to multiply two complex numbers in hardware. Furthermore, for the inverse

of a matrix ( $2 \times 2$ ), the position and sign changing method is used. In this method, to find the inverse of  $C$  matrix, the position of  $C(1,1)$  is replaced by  $C(2,2)$  and the signs of  $C(1,2)$  and  $C(2,1)$  are changed. Then it is divided by the determinant of  $C$  matrix. However, the division is more costly than multiplication in hardware, so the inverse of a number module is used; to find the determinant multiplicative inverse value and then it is multiplied by the matrix, to reduce the number of divisions in the architecture. Finally, the complex matrix multiplier module is designed to multiply two complex matrices.

Restoring divider is used to implement the inverse of a number module. It is a sequential divider and consumes longer time than other modules of the system. It obeys an iterative method and for n-bit data, it consumes n-clock cycles. On the other hand, remaining modules, such as adder, subtractor, complex multiplier and complex matrix multiplier are single cycle modules.

Complex multiplier is implemented with 3 multipliers and 4 add/sub modules instead of the conventional method which consumes 4 multipliers and 2 add/sub units. This approach increases the efficiency of the architecture design because multiplier is more costly than add/sub operation in hardware implementation.

The complex matrix multiplier comprises of 4 complex multipliers and 4 add/sub modules. Moreover, the variable data width is used in intermediate connections of the architecture. The usage of variable bit-width in data-path provides efficient use of the silicon area and reduces the power consumption.

The controller unit controls the data to write into the specific registers, and also deals with control signals according to the status inputs. Furthermore, it also generates the desired values of the rows and columns of the input image to be fed to the system.

MATLAB Simulink/ModelSim co-simulation design of the proposed architecture is depicted in Figure 1. It consists of HDL co-simulation block (ModelSim Simulator), MATLAB fcn (Function) block, number of converter blocks, delay block and Simout workspace block.

HDL co-simulation block communicates with ModelSim simulator and provides the input/output from MATLAB to ModelSim platform and vice-versa. The overall hardware design of SENSE reconstruction algorithm is inside this block. Simulink provides a test bench to this HDL block. MATLAB fcn (Function) block reads the data set, which includes coil sensitivity matrix and aliased image matrix. These values are fed to HDL co-simulation block as input according to the values of rows and columns of the desired aliased image pixels provided by the architecture. Coil sensitivity matrix variables are represented by “S1” to “S4” and folded image values are illustrated by “IM” in the MATLAB fcn block.

However, convert blocks are used for type casting between MATLAB (double) variables to binary fixed point and vice versa. Delay block is used to reset the system initially for 10 ns. Simout workspace block takes the data from the converter of HDL co-simulation block and saves in the workspace of

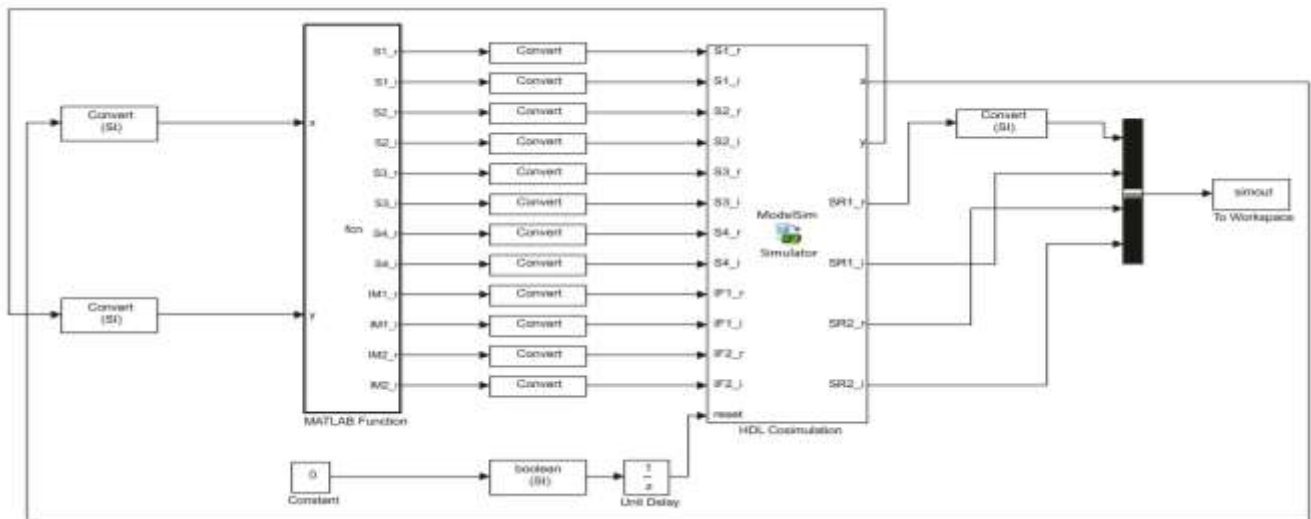


Figure 1. MATLAB Simulink/ModelSim co-simulation of the proposed design

the MATLAB. By accessing this workspace variable, the output image is displayed through “imshow” function of MATLAB.

#### 4. Results and Discussion

The proposed architecture is validated by MATLAB Simulink/ModelSim co-simulation. The synthesized code of the proposed hardware design is also tested on Xilinx ISE 13.2 software to find the maximum operating frequency of the proposed architecture. Table 2 shows the maximum operating frequency of the proposed design when the data - width of the divider is set to 64-bit and the computation time of SENSE reconstruction for 256×256 size image at that frequency.

The dataset is acquired from 1.5 Tesla MRI scanner. The dimensions of the receiver coil sensitivity maps, aliased image (undersampled) and original image (fully-sampled) are 256×256×2, 128×256×2 and 256×256, respectively.

Table 2. Maximum operating frequency and reconstruction time on FPGA (XILINX Virtex-7)

Maximum Frequency (MHz)	Reconstruction Time (ms)
400	5.24

Different comparison parameters are shown in Table 3. The performance is compared with the MATLAB reconstructed output. The parameters include artefact power, mean g-factor, median g-factor, standard deviation g-factor, and computation time.

The computation time of the proposed architectural design is quite remarkable, i.e., a thousand times better than MATLAB reconstruction at the cost of design efforts. This is because the proposed design is hardware based, whereas MATLAB is a heavily demanding software tool. Mean, median and standard deviation g-factors are the same in both reconstructions. However, the artefact power of the proposed design reconstruction is very high, but still it is in the acceptable range. Artefact power of the reconstructed image increases due to truncation error of the decimal number

representation in hardware. For simplicity, the input provided to the proposed design is of 16-bit in 9.7 fixed point format. Due to this format, some values of the inputs are truncated and this increases the artefact power. This error can be reduced by increasing the bit-width at the input end. However, the current data width is the best trade-off and gives satisfactory results for an acceptable artefact power.

Table 3. Comparison between MATLAB and proposed architecture reconstruction

	MATLAB Reconstruction	Proposed Architecture Reconstruction
Computation Time (ms)	5400	5.24
Mean g-factor	18.2616	18.2616
Median g-factor	8.9766	8.9766
Std. Mean g-factor	19.8518	19.8518
Artefact Power	5.7964 e <sup>-29</sup>	2.5 e <sup>-3</sup>

Figure 2 illustrates the proposed hardware design reconstructed image and the original image. The dimension of the resultant gray scale image is 256×256.

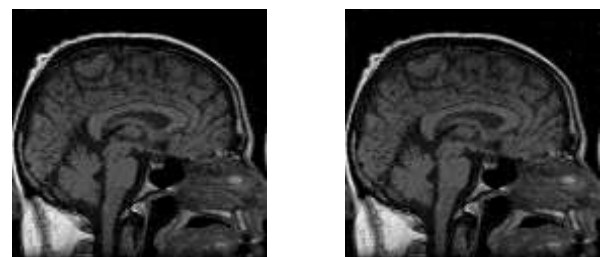
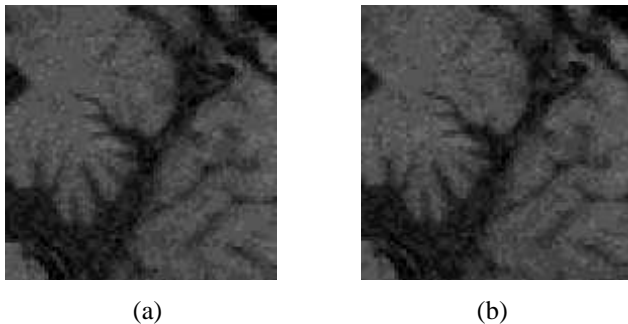


Figure 2. (a) Original image (b) Proposed design reconstructed image

The resultant image proves the competency of the proposed design; as the reconstructed image is an almost identical copy of the original image. Figure 3 shows the magnified version of the resultant image and the original image to enhance the comparison. The clarity of the image with respect to the original figure shows the remarkable efficiency of the proposed hardware.



**Figure 3.** Magnified section of (a) Original image  
(b) Proposed design reconstructed image

From the above results and comparisons, it is clear that the proposed system provides a significantly higher efficiency. The most remarkable feature of the proposed design is its low time consumption. Less power consumption is also one of the main features of the proposed work, as FPGA designs consume much less power than the CPU.

## 5. Conclusion

In this study, a high-speed and low power parameterized architecture is proposed for SENSE reconstruction of two receiver coil elements. This efficient system provides promising artefact power value in reconstructing the parallel MR undersampled image. According to the experimental results, the proposed approach yields better performance in terms of execution time. Moreover, the generalized version of this architecture can be easily used in the modern MR scanners.

In future, this work will be employed for different variants of SENSE and for any number of coils and acceleration factor. Furthermore, the computation time could be further

decreased by using the advanced parallel processing techniques.

## References

- [1] S. Bauer, R. Wiest, L.-P. Nolte, and M. Reyes, "A survey of MRI-based medical image analysis for brain tumor studies," *Physics in Medicine and Biology*, vol. 58, p. R97, 2013.
- [2] D. J. Larkman and R. G. Nunes, "Parallel magnetic resonance imaging," *Physics in medicine and biology*, vol. 52, p. R15, 2007.
- [3] K. P. Pruessmann, M. Weiger, M. B. Scheidegger, and P. Boesiger, "SENSE: sensitivity encoding for fast MRI," *Magnetic resonance in medicine*, vol. 42, pp. 952-962, 1999.
- [4] I. Chiuchişan and M. Cerlincă, "Implementation of Real-Time System for Medical Image Processing using Verilog Hardware Description Language," in *Proceedings of the 9th International Conference on Cellular and Molecular Biology, Biophysics and Bioengineering (BIO'13)*, Chania, 2013, pp. 66-69.
- [5] I. L. Dalal and F. L. Fontaine, "A Reconfigurable Real-time Reconstruction Engine for Parallel MRI," 2007.
- [6] S. S. Stone, J. P. Haldar, S. C. Tsao, W.-m. Hwu, B. P. Sutton, and Z.-P. Liang, "Accelerating advanced MRI reconstructions on GPUs," *Journal of Parallel and Distributed Computing*, vol. 68, pp. 1307-1318, 2008.
- [7] Y. Wang, Y. He, Y. Shan, T. Wu, D. Wu, and H. Yang, "Hardware computing for brain network analysis," in *Quality Electronic Design (ASQED), 2010 2nd Asia Symposium on*, 2010, pp. 219-222.
- [8] J. Cong, V. Sarkar, G. Reinman, and A. Bui, "Customizable domain-specific computing," *IEEE Design and Test of Computers*, vol. 28, pp. 6-15, 2011.
- [9] B. Wang, T. Wu, F. Yan, R. Li, N. Xu, and Y. Wang, "RankBoost Acceleration on both NVIDIA CUDA and ATI Stream platforms," in *Parallel and Distributed Systems (ICPADS), 2009 15th International Conference on*, Shenzhen, 2009, pp. 284-291.
- [10] N.-Y. Xu, X.-F. Cai, R. Gao, L. Zhang, and F.-H. Hsu, "Fpga-based accelerator design for rankboost in Web search engines," in *International Conference on Field-Programmable Technology, 2007. ICFPT 2007.*, Kitakyushu, 2007, pp. 33-40.
- [11] L. Zhuo and V. K. Prasanna, "Sparse matrix-vector multiplication on FPGAs," in *Proceedings of the 2005 ACM/SIGDA 13th international symposium on Field-programmable gate arrays*, California, 2005, pp. 63-74.