

**BENGKEL HIASAN DALAMAN ANJURAN BERSAMA JABATAN SENIBINA  
FAKULTI ALAM BINA UNIV MALAYA DAN BERITA PUBLISHING SDN BHD  
06 Julai – 24 Ogos 2002, Jab. Senibina, Fak. Alam Bina, Univ. Malaya**

# **INSIDE GREEN**

HAZREENA HUSSEIN  
[reena@alambina.um.edu.my](mailto:reena@alambina.um.edu.my)



# Introduction

**Purposes** – soften hard lines, screen off areas, define spaces, make tabletops and corners brighter.

**Functions** – remove pollutants and release oxygen. Therapeutic release.

**Part 1** deals with the basics of gardening.

**Part 2** deals specifically with gardening problems.

**Part 3** sets out a selection of indoor plants.

**Part 4** gives ideas on how plants can be displayed.

**References**



# The Basics

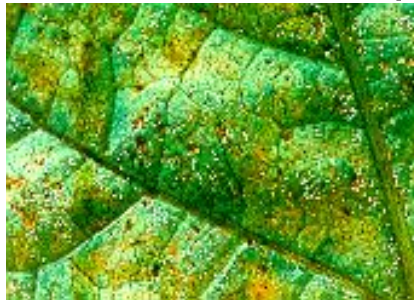


- ★ **How to choose** Plants from a Nursery?
- ★ **Light** – The critical factor. Sun or Shade?
- ★ **Water** – Easy does it. Under watering or Over watering?
- ★ **Humidity** – Plants love it. Air circulation, Wind, Air conditioning.
- ★ **Fertilizing** – Once a year is enough. Excess.
- ★ **Pruning** – Hints.
- ★ **Transplanting** – The why and how of it. Potting and Repotting.



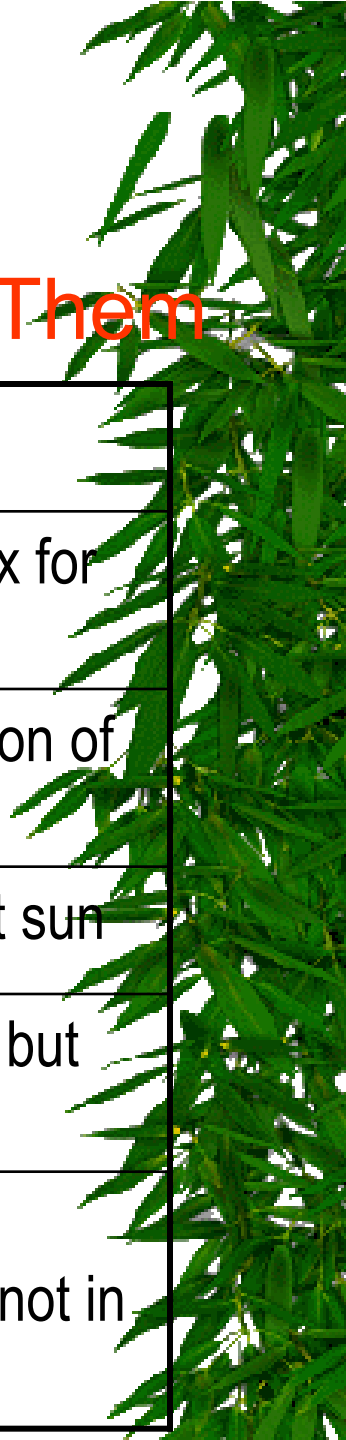
# Pest and Diseases

- ★ **Practices** to minimise pest problems.
- ★ **Precautions** in relation to pesticide use.
- ★ **Identification** of common pests – insects, mites, snails and diseases.



# Common Problems and How To Solve Them

<b>PROBLEM</b>	<b>CAUSE</b>	<b>SOLUTION</b>
Plant droops	Insufficient water	Check potting mix for mixture
Growth slow	Insufficient fertilizer	Apply correct ration of fertilizer
Plants look bleached	Direct sunlight	Move plant of out sun
Leaf edges turn brown	Not enough humidity	Move to a cooler but still bright room.
New growth weak, pale, small	Not enough light	Move plant to a brighter spot but not in direct sun



# Plants Selection

- ✦ For **flowers or foliage**?
- ✦ **Which plant** for which room? Does it matter?
- ✦ **Arranging** indoor plants –  
There are no rules.
- ✦ Slide show



## Plant List

- \* Aglonema 'Silver Queen'
- \* Alocasia x amazonica
- \* Calathea majestica  
'Roseolineata'
- \* Calathea makoyana
- \* Dieffenbachia amoena
- \* Dracaena fragrans
- \* Dracaena deremensis  
'Warneckii'
- \* Dracaena reflexa
- \* Dypsis lutescens
- \* Ficus benjamina
- \* Hemigraphis colorata
- \* Nephrolepis exaltata
- \* Rhaps excelsa
- \* Adiantum raddianum
- \* Asplenium nidus
- \* Platycerium superbum
- \* Scindapsus aureus
- \* Philodendron erubescens
- \* Cultivars of Begonia
- \* Cultivars of Caladium hortulanum



# Plants and Containers in Effective Displays

- ★ **Containers** – The choice is huge.
- ★ Presentation – the use of **soil less culture** by Hydro Plant.



# References

- ★ *500 Popular Indoor Plants*; Periplus Editions (HK) Ltd., 2000.
- ★ *Skyrise Gardening in Highrise Homes*; National Parks Board, Singapore, 2001.
- ★ *Interior Landscapes*; Rockport Publishers (Mass) Inc., 1999.
- ★ *The Art of Living in Singapore*;
- ★ *Garden Asia Magazine*.

