

Acta Crystallographica Section E

## Structure Reports

Online

ISSN 1600-5368

# Dichlorido[2-morpholino-*N*-[1-(2-pyridyl)ethylidene]ethanamine- $\kappa^3$ *N,N',N''*]-cadmium

Nurulazimah Ikmal Hisham, Nura Suleiman Gwaram, Hamid Khaledi\* and Hapipah Mohd Ali

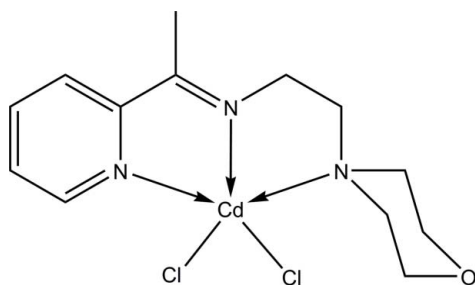
 Department of Chemistry, University of Malaya, 50603 Kuala Lumpur, Malaysia  
 Correspondence e-mail: khaledi@siswa.um.edu.my

Received 21 October 2010; accepted 22 October 2010

 Key indicators: single-crystal X-ray study;  $T = 100$  K; mean  $\sigma(\text{C}-\text{C}) = 0.008$  Å;  $R$  factor = 0.038;  $wR$  factor = 0.117; data-to-parameter ratio = 18.9.

In the title compound,  $[\text{CdCl}_2(\text{C}_{13}\text{H}_{19}\text{N}_3\text{O})]$ , the  $\text{Cd}^{\text{II}}$  ion is five-coordinate, with the  $N,N',N''$ -tridentate Schiff base ligand 2-morpholino-*N*-[1-(2-pyridyl)ethylidene]ethanamine and two Cl atoms in a distorted square-pyramidal geometry. In the crystal structure,  $\text{C}-\text{H}\cdots\text{Cl}$  hydrogen-bonding interactions connect the molecules into a three-dimensional network.

## Related literature

 For the crystal structures of similar compounds, see: Ikmal Hisham *et al.* (2009); Cai (2009).


## Experimental

## Crystal data

 $[\text{CdCl}_2(\text{C}_{13}\text{H}_{19}\text{N}_3\text{O})]$   
 $M_r = 416.61$   
 Monoclinic,  $P2_1/n$   
 $a = 9.6357$  (12) Å  
 $b = 13.9300$  (18) Å  
 $c = 12.2514$  (17) Å  
 $\beta = 106.776$  (2)°

 $V = 1574.5$  (4) Å<sup>3</sup>  
 $Z = 4$   
 Mo  $K\alpha$  radiation  
 $\mu = 1.73$  mm<sup>-1</sup>  
 $T = 100$  K  
 $0.23 \times 0.10 \times 0.04$  mm

## Data collection

 Bruker APEXII CCD diffractometer  
 Absorption correction: multi-scan (*SADABS*; Sheldrick, 1996)  
 $T_{\text{min}} = 0.692$ ,  $T_{\text{max}} = 0.934$ 

 9407 measured reflections  
 3437 independent reflections  
 2646 reflections with  $I > 2\sigma(I)$   
 $R_{\text{int}} = 0.043$ 

## Refinement

 $R[F^2 > 2\sigma(F^2)] = 0.038$   
 $wR(F^2) = 0.117$   
 $S = 1.08$   
 3437 reflections

 182 parameters  
 H-atom parameters constrained  
 $\Delta\rho_{\text{max}} = 0.81$  e Å<sup>-3</sup>  
 $\Delta\rho_{\text{min}} = -1.16$  e Å<sup>-3</sup>

Table 1

Hydrogen-bond geometry (Å, °).

$D-H\cdots A$	$D-H$	$H\cdots A$	$D\cdots A$	$D-H\cdots A$
$\text{C4}-\text{H4}\cdots\text{Cl1}^{\text{i}}$	0.95	2.69	3.603 (6)	161
$\text{C7}-\text{H7C}\cdots\text{Cl2}^{\text{ii}}$	0.98	2.73	3.607 (6)	149
$\text{C8}-\text{H8A}\cdots\text{Cl2}^{\text{iii}}$	0.99	2.82	3.730 (6)	153
$\text{C11}-\text{H11B}\cdots\text{Cl1}$	0.99	2.80	3.654 (6)	144

 Symmetry codes: (i)  $-x + 1, -y, -z + 1$ ; (ii)  $-x + 2, -y, -z + 1$ ; (iii)  $-x + \frac{1}{2}, y - \frac{1}{2}, -z + \frac{1}{2}$ .

Data collection: *APEX2* (Bruker, 2007); cell refinement: *SAINTE* (Bruker, 2007); data reduction: *SAINTE*; program(s) used to solve structure: *SHELXS97* (Sheldrick, 2008); program(s) used to refine structure: *SHELXL97* (Sheldrick, 2008); molecular graphics: *X-SEED* (Barbour, 2001); software used to prepare material for publication: *SHELXL97* and *pubCIF* (Westrip, 2010).

The authors thank the University of Malaya for funding this study (UMRG grant RG024/09BIO).

Supplementary data and figures for this paper are available from the IUCr electronic archives (Reference: PV2344).

## References

- Barbour, L. J. (2001). *J. Supramol. Chem.* **1**, 189–191.  
 Bruker (2007). *APEX2* and *SAINTE*. Bruker AXS Inc., Madison, Wisconsin, USA.  
 Cai, B.-H. (2009). *Acta Cryst.* **E65**, m142.  
 Ikmal Hisham, N. A., Ali, H. M. & Ng, S. W. (2009). *Acta Cryst.* **E65**, m870.  
 Sheldrick, G. M. (1996). *SADABS*. University of Göttingen, Germany.  
 Sheldrick, G. M. (2008). *Acta Cryst.* **A64**, 112–122.  
 Westrip, S. P. (2010). *J. Appl. Cryst.* **43**, 920–925.

**supplementary materials**

*Acta Cryst.* (2010). E66, m1471 [ doi:10.1107/S1600536810043163 ]

**Dichlorido{2-morpholino-*N*-[1-(2-pyridyl)ethylidene]ethanamine- $\kappa^3N,N',N''$ }cadmium**

**N. Ikmal Hisham, N. Suleiman Gwaram, H. Khaledi and H. Mohd Ali**

**Comment**

The title compound has been obtained *via* the complexation of cadmium(II) chloride by the *N,N,N*-tridentate ligand, 2-morpholino-*N*-[1-(2-pyridyl)ethylidene]ethanamine, which had itself been prepared from the condensation of 4-(2-aminoethyl)morpholine and 2-acetylpyridine. The geometry of the complex can be defined as distorted square-pyramidal ( $\tau = 0.18$ ) with one of the chloride ligands in the apical position. Like the similar structures reported in the literature [Ikmal Hisham *et al.*, 2009; Cai, 2009], the morpholine ring in the present complex adopts a chair conformation. In the crystal structure, the molecules are linked together through C—H $\cdots$ Cl interactions into a three dimensional network.

**Experimental**

A mixture of 4-(2-aminoethyl)morpholine (0.65 g, 5 mmol) and 2-acetylpyridine (0.61 g, 5 mmol) in ethanol (50 ml) was refluxed for 2 h followed by addition of a solution of cadmium(II) chloride (0.92 g, 5 mmol) in a minimum amount of water. The resulting solution was refluxed for 30 min, then evaporated partially and set aside at room temperature. The crystals of the cadmium(II) complex were obtained after a week.

**Refinement**

The hydrogen atoms were placed at calculated positions (C—H 0.95 - 0.99 Å) and were treated as riding on their parent atoms with *U*(H) set to 1.2–1.5 *U*<sub>eq</sub>(C).

**Figures**

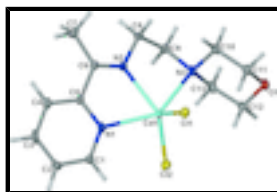


Fig. 1. Thermal ellipsoid plot of the title compound at the 50% probability level. Hydrogen atoms are drawn as spheres of arbitrary radius.

**Dichlorido{2-morpholino-*N*-[1-(2-pyridyl)ethylidene]ethanamine-  $\kappa^3N,N',N''$ }cadmium(II)**

*Crystal data*

[CdCl<sub>2</sub>(C<sub>13</sub>H<sub>19</sub>N<sub>3</sub>O)]

*M<sub>r</sub>* = 416.61

Monoclinic, *P*2<sub>1</sub>/*n*

Hall symbol: -*P* 2yn

*a* = 9.6357 (12) Å

*F*(000) = 832

*D<sub>x</sub>* = 1.758 Mg m<sup>-3</sup>

Mo *K*α radiation, λ = 0.71073 Å

Cell parameters from 2378 reflections

θ = 2.3–27.3°

# supplementary materials

---

$b = 13.9300 (18) \text{ \AA}$	$\mu = 1.73 \text{ mm}^{-1}$
$c = 12.2514 (17) \text{ \AA}$	$T = 100 \text{ K}$
$\beta = 106.776 (2)^\circ$	Lath, colorless
$V = 1574.5 (4) \text{ \AA}^3$	$0.23 \times 0.10 \times 0.04 \text{ mm}$
$Z = 4$	

## Data collection

Bruker APEXII CCD diffractometer	3437 independent reflections
Radiation source: fine-focus sealed tube graphite	2646 reflections with $I > 2\sigma(I)$
$\varphi$ and $\omega$ scans	$R_{\text{int}} = 0.043$
Absorption correction: multi-scan (SADABS; Sheldrick, 1996)	$\theta_{\text{max}} = 27.0^\circ$ , $\theta_{\text{min}} = 2.3^\circ$
$T_{\text{min}} = 0.692$ , $T_{\text{max}} = 0.934$	$h = -8 \rightarrow 12$
9407 measured reflections	$k = -10 \rightarrow 17$
	$l = -15 \rightarrow 15$

## Refinement

Refinement on $F^2$	Primary atom site location: structure-invariant direct methods
Least-squares matrix: full	Secondary atom site location: difference Fourier map
$R[F^2 > 2\sigma(F^2)] = 0.038$	Hydrogen site location: inferred from neighbouring sites
$wR(F^2) = 0.117$	H-atom parameters constrained
$S = 1.08$	$w = 1/[\sigma^2(F_o^2) + (0.0488P)^2 + 6.1933P]$
3437 reflections	where $P = (F_o^2 + 2F_c^2)/3$
182 parameters	$(\Delta/\sigma)_{\text{max}} < 0.001$
0 restraints	$\Delta\rho_{\text{max}} = 0.81 \text{ e \AA}^{-3}$
	$\Delta\rho_{\text{min}} = -1.16 \text{ e \AA}^{-3}$

## Special details

**Geometry.** All e.s.d.'s (except the e.s.d. in the dihedral angle between two l.s. planes) are estimated using the full covariance matrix. The cell e.s.d.'s are taken into account individually in the estimation of e.s.d.'s in distances, angles and torsion angles; correlations between e.s.d.'s in cell parameters are only used when they are defined by crystal symmetry. An approximate (isotropic) treatment of cell e.s.d.'s is used for estimating e.s.d.'s involving l.s. planes.

**Refinement.** Refinement of  $F^2$  against ALL reflections. The weighted  $R$ -factor  $wR$  and goodness of fit  $S$  are based on  $F^2$ , conventional  $R$ -factors  $R$  are based on  $F$ , with  $F$  set to zero for negative  $F^2$ . The threshold expression of  $F^2 > \sigma(F^2)$  is used only for calculating  $R$ -factors(gt) etc. and is not relevant to the choice of reflections for refinement.  $R$ -factors based on  $F^2$  are statistically about twice as large as those based on  $F$ , and  $R$ -factors based on ALL data will be even larger.

## Fractional atomic coordinates and isotropic or equivalent isotropic displacement parameters ( $\text{\AA}^2$ )

	$x$	$y$	$z$	$U_{\text{iso}}^*/U_{\text{eq}}$
Cd1	0.77057 (4)	0.09902 (3)	0.33319 (3)	0.01533 (13)

Cl1	0.52520 (14)	0.14366 (10)	0.21865 (11)	0.0195 (3)
Cl2	0.96418 (15)	0.21768 (10)	0.36618 (11)	0.0210 (3)
O1	0.8174 (4)	0.0583 (3)	-0.0120 (3)	0.0235 (9)
N1	0.7320 (5)	0.1178 (3)	0.5165 (4)	0.0180 (10)
N2	0.7579 (5)	-0.0471 (3)	0.4170 (4)	0.0173 (10)
N3	0.8461 (5)	-0.0170 (3)	0.2128 (4)	0.0177 (10)
C1	0.7366 (6)	0.2002 (4)	0.5727 (4)	0.0194 (11)
H1	0.7649	0.2567	0.5413	0.023*
C2	0.7020 (6)	0.2073 (4)	0.6749 (4)	0.0205 (12)
H2	0.7079	0.2672	0.7131	0.025*
C3	0.6588 (7)	0.1252 (5)	0.7199 (4)	0.0261 (14)
H3	0.6321	0.1281	0.7886	0.031*
C4	0.6552 (6)	0.0378 (4)	0.6629 (5)	0.0214 (12)
H4	0.6271	-0.0195	0.6927	0.026*
C5	0.6932 (6)	0.0363 (4)	0.5621 (4)	0.0153 (11)
C6	0.7049 (6)	-0.0549 (4)	0.4993 (4)	0.0154 (11)
C7	0.6593 (6)	-0.1485 (4)	0.5389 (5)	0.0225 (12)
H7A	0.6077	-0.1870	0.4726	0.034*
H7B	0.5951	-0.1362	0.5866	0.034*
H7C	0.7452	-0.1836	0.5834	0.034*
C8	0.7876 (6)	-0.1294 (4)	0.3538 (4)	0.0200 (12)
H8A	0.6972	-0.1515	0.2978	0.024*
H8B	0.8274	-0.1830	0.4067	0.024*
C9	0.8969 (6)	-0.0984 (4)	0.2929 (5)	0.0204 (12)
H9A	0.9881	-0.0795	0.3504	0.024*
H9B	0.9188	-0.1538	0.2499	0.024*
C10	0.7321 (6)	-0.0497 (4)	0.1112 (4)	0.0210 (12)
H10A	0.6446	-0.0677	0.1334	0.025*
H10B	0.7662	-0.1074	0.0794	0.025*
C11	0.6935 (6)	0.0277 (4)	0.0212 (5)	0.0209 (12)
H11A	0.6187	0.0031	-0.0465	0.025*
H11B	0.6521	0.0834	0.0511	0.025*
C12	0.9219 (6)	0.0938 (4)	0.0846 (5)	0.0228 (12)
H12A	0.8806	0.1489	0.1158	0.027*
H12B	1.0065	0.1174	0.0619	0.027*
C13	0.9722 (6)	0.0184 (4)	0.1767 (5)	0.0234 (13)
H13A	1.0175	-0.0357	0.1473	0.028*
H13B	1.0456	0.0464	0.2430	0.028*

Atomic displacement parameters ( $\text{\AA}^2$ )

	$U^{11}$	$U^{22}$	$U^{33}$	$U^{12}$	$U^{13}$	$U^{23}$
Cd1	0.0202 (2)	0.0147 (2)	0.01291 (19)	0.00042 (16)	0.00765 (14)	0.00102 (15)
Cl1	0.0196 (6)	0.0200 (7)	0.0194 (6)	0.0030 (5)	0.0065 (5)	0.0031 (5)
Cl2	0.0217 (7)	0.0215 (7)	0.0208 (6)	-0.0038 (5)	0.0076 (5)	0.0009 (5)
O1	0.028 (2)	0.029 (2)	0.0161 (18)	-0.0047 (19)	0.0109 (17)	-0.0021 (17)
N1	0.020 (2)	0.023 (3)	0.011 (2)	0.0020 (19)	0.0050 (18)	0.0010 (18)
N2	0.023 (2)	0.015 (2)	0.014 (2)	0.0009 (19)	0.0050 (18)	0.0000 (18)

## supplementary materials

---

N3	0.018 (2)	0.023 (3)	0.013 (2)	0.0012 (19)	0.0057 (18)	-0.0006 (18)
C1	0.025 (3)	0.017 (3)	0.016 (2)	-0.004 (2)	0.005 (2)	0.001 (2)
C2	0.026 (3)	0.016 (3)	0.018 (3)	0.006 (2)	0.004 (2)	-0.004 (2)
C3	0.029 (3)	0.039 (4)	0.010 (2)	0.007 (3)	0.006 (2)	0.002 (2)
C4	0.025 (3)	0.025 (3)	0.017 (3)	0.000 (2)	0.011 (2)	0.003 (2)
C5	0.015 (3)	0.017 (3)	0.013 (2)	0.001 (2)	0.003 (2)	0.004 (2)
C6	0.013 (2)	0.018 (3)	0.015 (2)	0.002 (2)	0.003 (2)	0.003 (2)
C7	0.025 (3)	0.021 (3)	0.021 (3)	-0.002 (2)	0.007 (2)	0.005 (2)
C8	0.032 (3)	0.010 (3)	0.019 (3)	0.006 (2)	0.008 (2)	0.001 (2)
C9	0.029 (3)	0.012 (3)	0.021 (3)	0.009 (2)	0.009 (2)	0.001 (2)
C10	0.026 (3)	0.022 (3)	0.015 (2)	0.000 (2)	0.006 (2)	-0.004 (2)
C11	0.024 (3)	0.024 (3)	0.017 (3)	-0.003 (2)	0.008 (2)	-0.001 (2)
C12	0.026 (3)	0.024 (3)	0.023 (3)	-0.012 (3)	0.014 (2)	-0.008 (2)
C13	0.022 (3)	0.031 (4)	0.021 (3)	0.002 (3)	0.012 (2)	-0.006 (2)

### *Geometric parameters (Å, °)*

Cd1—N2	2.298 (5)	C4—H4	0.9500
Cd1—N1	2.394 (4)	C5—C6	1.506 (8)
Cd1—N3	2.437 (4)	C6—C7	1.501 (8)
Cd1—Cl2	2.4374 (14)	C7—H7A	0.9800
Cd1—Cl1	2.4557 (14)	C7—H7B	0.9800
O1—C12	1.404 (7)	C7—H7C	0.9800
O1—C11	1.432 (6)	C8—C9	1.519 (8)
N1—C1	1.332 (7)	C8—H8A	0.9900
N1—C5	1.364 (7)	C8—H8B	0.9900
N2—C6	1.261 (7)	C9—H9A	0.9900
N2—C8	1.458 (7)	C9—H9B	0.9900
N3—C10	1.474 (7)	C10—C11	1.510 (8)
N3—C9	1.487 (7)	C10—H10A	0.9900
N3—C13	1.492 (7)	C10—H10B	0.9900
C1—C2	1.390 (7)	C11—H11A	0.9900
C1—H1	0.9500	C11—H11B	0.9900
C2—C3	1.385 (8)	C12—C13	1.515 (8)
C2—H2	0.9500	C12—H12A	0.9900
C3—C4	1.398 (8)	C12—H12B	0.9900
C3—H3	0.9500	C13—H13A	0.9900
C4—C5	1.385 (7)	C13—H13B	0.9900
N2—Cd1—N1	68.60 (16)	C6—C7—H7B	109.5
N2—Cd1—N3	75.33 (15)	H7A—C7—H7B	109.5
N1—Cd1—N3	142.63 (15)	C6—C7—H7C	109.5
N2—Cd1—Cl2	131.54 (12)	H7A—C7—H7C	109.5
N1—Cd1—Cl2	95.10 (12)	H7B—C7—H7C	109.5
N3—Cd1—Cl2	101.67 (11)	N2—C8—C9	107.9 (5)
N2—Cd1—Cl1	108.24 (12)	N2—C8—H8A	110.1
N1—Cd1—Cl1	97.11 (11)	C9—C8—H8A	110.1
N3—Cd1—Cl1	103.21 (11)	N2—C8—H8B	110.1
Cl2—Cd1—Cl1	119.18 (5)	C9—C8—H8B	110.1
C12—O1—C11	108.6 (4)	H8A—C8—H8B	108.4

C1—N1—C5	118.5 (4)	N3—C9—C8	113.5 (4)
C1—N1—Cd1	126.0 (4)	N3—C9—H9A	108.9
C5—N1—Cd1	115.4 (3)	C8—C9—H9A	108.9
C6—N2—C8	123.0 (5)	N3—C9—H9B	108.9
C6—N2—Cd1	121.3 (4)	C8—C9—H9B	108.9
C8—N2—Cd1	114.6 (3)	H9A—C9—H9B	107.7
C10—N3—C9	110.2 (4)	N3—C10—C11	111.2 (5)
C10—N3—C13	108.9 (4)	N3—C10—H10A	109.4
C9—N3—C13	107.8 (4)	C11—C10—H10A	109.4
C10—N3—Cd1	115.9 (3)	N3—C10—H10B	109.4
C9—N3—Cd1	101.9 (3)	C11—C10—H10B	109.4
C13—N3—Cd1	111.8 (3)	H10A—C10—H10B	108.0
N1—C1—C2	123.1 (5)	O1—C11—C10	111.7 (5)
N1—C1—H1	118.4	O1—C11—H11A	109.3
C2—C1—H1	118.4	C10—C11—H11A	109.3
C3—C2—C1	118.6 (5)	O1—C11—H11B	109.3
C3—C2—H2	120.7	C10—C11—H11B	109.3
C1—C2—H2	120.7	H11A—C11—H11B	107.9
C2—C3—C4	119.1 (5)	O1—C12—C13	112.4 (5)
C2—C3—H3	120.5	O1—C12—H12A	109.1
C4—C3—H3	120.5	C13—C12—H12A	109.1
C5—C4—C3	118.9 (5)	O1—C12—H12B	109.1
C5—C4—H4	120.5	C13—C12—H12B	109.1
C3—C4—H4	120.5	H12A—C12—H12B	107.9
N1—C5—C4	121.8 (5)	N3—C13—C12	109.7 (5)
N1—C5—C6	115.0 (4)	N3—C13—H13A	109.7
C4—C5—C6	123.1 (5)	C12—C13—H13A	109.7
N2—C6—C7	123.9 (5)	N3—C13—H13B	109.7
N2—C6—C5	116.3 (5)	C12—C13—H13B	109.7
C7—C6—C5	119.8 (4)	H13A—C13—H13B	108.2
C6—C7—H7A	109.5		

Hydrogen-bond geometry ( $\text{\AA}$ ,  $^\circ$ )

$D-H\cdots A$	$D-H$	$H\cdots A$	$D\cdots A$	$D-H\cdots A$
C4—H4 $\cdots$ C11 <sup>i</sup>	0.95	2.69	3.603 (6)	161
C7—H7C $\cdots$ C12 <sup>ii</sup>	0.98	2.73	3.607 (6)	149
C8—H8A $\cdots$ C12 <sup>iii</sup>	0.99	2.82	3.730 (6)	153
C11—H11B $\cdots$ C11	0.99	2.80	3.654 (6)	144

Symmetry codes: (i)  $-x+1, -y, -z+1$ ; (ii)  $-x+2, -y, -z+1$ ; (iii)  $-x+3/2, y-1/2, -z+1/2$ .

Fig. 1

