

Acta Crystallographica Section E

Structure Reports

Online

ISSN 1600-5368

Dichlorido(2-[[2-(piperazin-4-ium-1-yl)-ethyl]iminomethyl]phenolate)-cadmium(II)

Muhammad Saleh Salga, Hamid Khaleedi* and Hapipah Mohd Ali

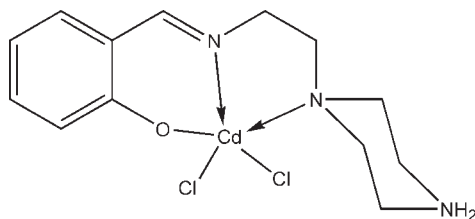
 Department of Chemistry, University of Malaya, 50603 Kuala Lumpur, Malaysia
 Correspondence e-mail: khaleedi@siswa.um.edu.my

Received 8 August 2010; accepted 12 August 2010

 Key indicators: single-crystal X-ray study; $T = 100$ K; mean $\sigma(\text{C}-\text{C}) = 0.002$ Å; R factor = 0.017; wR factor = 0.045; data-to-parameter ratio = 19.8.

In the title compound, $[\text{CdCl}_2(\text{C}_{13}\text{H}_{19}\text{N}_3\text{O})]$, the Cd^{II} ion is pentacoordinated with the N,N,O -tridentate Schiff base 2-[[2-(piperazin-4-ium-1-yl)ethyl]iminomethyl]phenolate ligand and two Cl atoms in a highly distorted square-pyramidal geometry; the piperazine ring adopts a chair conformation. In the crystal structure, adjacent molecules are linked together via $\text{N}-\text{H}\cdots\text{O}$ and $\text{N}-\text{H}\cdots\text{Cl}$ hydrogen bonds, forming infinite layers parallel to the ab plane. The layers are further connected through $\text{C}-\text{H}\cdots\text{Cl}$ interactions into a three-dimensional network.

Related literature

 For related structures, see: Mukhopadhyay *et al.* (2003); Xu *et al.* (2008).


Experimental

Crystal data

 $[\text{CdCl}_2(\text{C}_{13}\text{H}_{19}\text{N}_3\text{O})]$
 $M_r = 416.61$

 Orthorhombic, $Pbca$
 $a = 14.7512$ (16) Å

 $b = 13.1406$ (15) Å
 $c = 16.6188$ (19) Å
 $V = 3221.4$ (6) Å³
 $Z = 8$

 Mo $K\alpha$ radiation
 $\mu = 1.69$ mm⁻¹
 $T = 100$ K
 $0.45 \times 0.39 \times 0.18$ mm

Data collection

 Bruker APEXII CCD diffractometer
 Absorption correction: multi-scan (SADABS; Sheldrick, 1996)
 $T_{\text{min}} = 0.518$, $T_{\text{max}} = 0.751$

 38841 measured reflections
 3700 independent reflections
 3409 reflections with $I > 2\sigma(I)$
 $R_{\text{int}} = 0.041$

Refinement

 $R[F^2 > 2\sigma(F^2)] = 0.017$
 $wR(F^2) = 0.045$
 $S = 1.06$
 3700 reflections
 187 parameters
 2 restraints

 H atoms treated by a mixture of independent and constrained refinement
 $\Delta\rho_{\text{max}} = 0.44$ e Å⁻³
 $\Delta\rho_{\text{min}} = -0.28$ e Å⁻³

Table 1

Hydrogen-bond geometry (Å, °).

| $D-\text{H}\cdots A$ | $D-\text{H}$ | $\text{H}\cdots A$ | $D\cdots A$ | $D-\text{H}\cdots A$ |
|---|--------------|--------------------|-------------|----------------------|
| $\text{N3}-\text{H3A}\cdots\text{Cl1}^{\text{i}}$ | 0.89 (2) | 2.53 (2) | 3.3108 (14) | 146 (2) |
| $\text{N3}-\text{H3A}\cdots\text{Cl2}^{\text{ii}}$ | 0.89 (2) | 2.78 (2) | 3.2689 (14) | 116 (2) |
| $\text{N3}-\text{H3B}\cdots\text{O1}^{\text{ii}}$ | 0.89 (2) | 1.80 (2) | 2.6743 (17) | 167 (2) |
| $\text{C11}-\text{H11B}\cdots\text{Cl2}$ | 0.99 | 2.70 | 3.6372 (16) | 157 |
| $\text{C13}-\text{H13B}\cdots\text{Cl1}$ | 0.99 | 2.78 | 3.4302 (16) | 124 |
| $\text{C4}-\text{H4}\cdots\text{Cl1}^{\text{iii}}$ | 0.95 | 2.80 | 3.7165 (17) | 161 |
| $\text{C13}-\text{H13A}\cdots\text{Cl1}^{\text{i}}$ | 0.99 | 2.82 | 3.5851 (16) | 134 |

 Symmetry codes: (i) $-x + \frac{3}{2}, y + \frac{1}{2}, z$; (ii) $-x + 2, y + \frac{1}{2}, -z + \frac{1}{2}$; (iii) $x, -y + \frac{1}{2}, z + \frac{1}{2}$.

Data collection: APEX2 (Bruker, 2007); cell refinement: SAINT (Bruker, 2007); data reduction: SAINT; program(s) used to solve structure: SHELXS97 (Sheldrick, 2008); program(s) used to refine structure: SHELXL97 (Sheldrick, 2008); molecular graphics: XSEED (Barbour, 2001); software used to prepare material for publication: SHELXL97 and publCIF (Westrip, 2010).

The authors thank the University of Malaya for funding this study (FRGS grant No. FP009/2008 C).

Supplementary data and figures for this paper are available from the IUCr electronic archives (Reference: PV2318).

References

- Barbour, L. J. (2001). *J. Supramol. Chem.* **1**, 189–191.
 Bruker (2007). APEX2 and SAINT. Bruker AXS Inc., Madison, Wisconsin, USA.
 Mukhopadhyay, S., Mandal, D., Ghosh, D., Goldberg, I. & Chaudhury, M. (2003). *Inorg. Chem.* **42**, 8439–8445.
 Sheldrick, G. M. (1996). SADABS. University of Göttingen, Germany.
 Sheldrick, G. M. (2008). *Acta Cryst.* **A64**, 112–122.
 Westrip, S. P. (2010). *J. Appl. Cryst.* **43**, 920–925.
 Xu, R. B., Xu, X. Y., Wang, M. Y., Wang, D. Q., Yin, T., Xu, G. X., Yang, X. J., Lu, L. D., Wang, X. & Lei, Y. J. (2008). *J. Coord. Chem.* **61**, 3306–3313.

supplementary materials

Acta Cryst. (2010). E66, m1131 [doi:10.1107/S1600536810032563]

Dichlorido(2-{[2-(piperazin-4-ium-1-yl)ethyl]iminomethyl}phenolate)cadmium(II)

M. Saleh Salga, H. Khaledi and H. Mohd Ali

Comment

The title compound is a cadmium (II) complex of the Schiff base ligand, 1-(2-salicylaldiminoethyl)piperazine. The piperazinyl arm of the ligand can, in principle, have both boat and chair conformations that makes the molecule to display ambidentate coordination behavior. The ligand has been shown to act as a tetradentate or tridentate chelate with nickel(II) ions, depending on the piperazine ring conformation (Mukhopadhyay *et al.*, 2003). In the title complex, the piperazine ring adopts the chair conformation and the ligand is bound to the metal ion in a NNO-tridentate fashion. The cadmium(II) atom is penta-coordinated by the Schiff base ligand and two chloride atoms in a highly distorted square planar geometry (index $\tau = 0.38$). The piperzaine nitrogen atom, N3, which stays away from coordination, is protonated, implying the zwitterionic nature of the complex. In the crystal structure, intermolecular N—H \cdots O, N—H \cdots Cl and C—H \cdots Cl hydrogen bonds connect the adjacent molecules into infinite three-dimensional network (Fig. 2). Moreover, intramolecular C—H \cdots Cl hydrogen bondings are observed. The crystal structure contains void spaces with the size of 199 Å³ (6.2% of the cell volume) within which there is no evidence for included solvent.

Experimental

The Schiff base ligand was prepared following the procedure reported previously (Mukhopadhyay *et al.*, 2003). The cadmium (II) complex was synthesized by treatment of the ligand (0.233 g, 1 mmol) with cadmium (II) chloride (0.183 g, 1 mmol) in ethanol (20 ml). The mixture was stirred at room temperature for 10 min and then set aside for a few days whereupon the yellow crystals of the title compound were obtained.

Refinement

The C-bound hydrogen atoms were placed at idealized positions (C—H = 0.95–0.99 Å) and were treated as riding on their parent atoms. The N-bound hydrogen atoms were located in a difference Fourier map and refined with distance restraint of N—H 0.88 (2) Å. The $U_{iso}(H)$ were allowed at 1.2 $U_{eq}(C)$ or 1.5 $U_{eq}(N)$. The final difference map was essentially featureless.

Figures

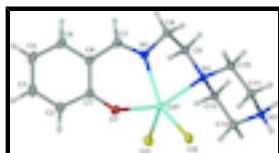


Fig. 1. Displacement ellipsoid plot of the title compound at the 50% probability level. H atoms are drawn as spheres of arbitrary radius.

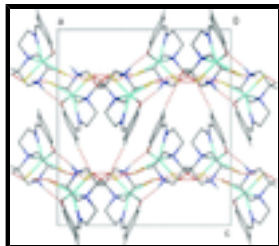


Fig. 2. Unit-cell packing of the title compound, viewed down the *b* axis, showing the hydrogen-bonded polymeric network. H atoms not involved in hydrogen bonds have been omitted for clarity.

Dichlorido(2-[[2-(piperazin-4-ium-1-yl)ethyl]iminomethyl]phenolate)cadmium(II)

Crystal data

[CdCl₂(C₁₃H₁₉N₃O)]

M_r = 416.61

Orthorhombic, *Pbca*

Hall symbol: -P 2ac 2ab

a = 14.7512 (16) Å

b = 13.1406 (15) Å

c = 16.6188 (19) Å

V = 3221.4 (6) Å³

Z = 8

F(000) = 1664

D_x = 1.718 Mg m⁻³

Mo *K*α radiation, λ = 0.71073 Å

Cell parameters from 9877 reflections

θ = 2.4–31.3°

μ = 1.69 mm⁻¹

T = 100 K

Block, yellow

0.45 × 0.39 × 0.18 mm

Data collection

Bruker APEXII CCD
diffractometer

Radiation source: fine-focus sealed tube
graphite

φ and ω scans

Absorption correction: multi-scan
(*SADABS*; Sheldrick, 1996)

T_{min} = 0.518, *T_{max}* = 0.751

38841 measured reflections

3700 independent reflections

3409 reflections with *I* > 2σ(*I*)

R_{int} = 0.041

θ_{max} = 27.5°, θ_{min} = 2.4°

h = -19→19

k = -17→17

l = -21→21

Refinement

Refinement on *F*²

Least-squares matrix: full

R [*F*² > 2σ(*F*²)] = 0.017

wR(*F*²) = 0.045

S = 1.06

3700 reflections

187 parameters

Primary atom site location: structure-invariant direct methods

Secondary atom site location: difference Fourier map

Hydrogen site location: inferred from neighbouring sites

H atoms treated by a mixture of independent and constrained refinement

w = 1/[σ²(*F_o*²) + (0.0187*P*)² + 2.1332*P*]

where *P* = (*F_o*² + 2*F_c*²)/3

(Δ/σ)_{max} = 0.002

Δρ_{max} = 0.44 e Å⁻³

2 restraints

$$\Delta\rho_{\min} = -0.28 \text{ e } \text{\AA}^{-3}$$

Special details

Geometry. All e.s.d.'s (except the e.s.d. in the dihedral angle between two l.s. planes) are estimated using the full covariance matrix. The cell e.s.d.'s are taken into account individually in the estimation of e.s.d.'s in distances, angles and torsion angles; correlations between e.s.d.'s in cell parameters are only used when they are defined by crystal symmetry. An approximate (isotropic) treatment of cell e.s.d.'s is used for estimating e.s.d.'s involving l.s. planes.

Refinement. Refinement of F^2 against ALL reflections. The weighted R -factor wR and goodness of fit S are based on F^2 , conventional R -factors R are based on F , with F set to zero for negative F^2 . The threshold expression of $F^2 > \sigma(F^2)$ is used only for calculating R -factors(gt) *etc.* and is not relevant to the choice of reflections for refinement. R -factors based on F^2 are statistically about twice as large as those based on F , and R -factors based on ALL data will be even larger.

Fractional atomic coordinates and isotropic or equivalent isotropic displacement parameters (\AA^2)

| | <i>x</i> | <i>y</i> | <i>z</i> | $U_{\text{iso}}^*/U_{\text{eq}}$ |
|------|--------------|--------------|--------------|----------------------------------|
| Cd1 | 0.915609 (7) | 0.521115 (8) | 0.335271 (6) | 0.01335 (4) |
| Cl1 | 0.80478 (3) | 0.46142 (3) | 0.23256 (2) | 0.02000 (8) |
| Cl2 | 1.05575 (2) | 0.57074 (3) | 0.26583 (2) | 0.01803 (8) |
| O1 | 0.98159 (7) | 0.37354 (9) | 0.37625 (7) | 0.0192 (2) |
| N1 | 0.87369 (9) | 0.52146 (10) | 0.46665 (8) | 0.0162 (3) |
| N2 | 0.83315 (8) | 0.68754 (10) | 0.35360 (8) | 0.0139 (2) |
| N3 | 0.88695 (9) | 0.83051 (10) | 0.22922 (8) | 0.0149 (2) |
| H3A | 0.8533 (12) | 0.8859 (13) | 0.2359 (11) | 0.022* |
| H3B | 0.9244 (12) | 0.8437 (16) | 0.1887 (11) | 0.022* |
| C1 | 0.95272 (10) | 0.31114 (12) | 0.43163 (9) | 0.0169 (3) |
| C2 | 0.96780 (11) | 0.20498 (12) | 0.42363 (10) | 0.0195 (3) |
| H2 | 0.9967 | 0.1802 | 0.3765 | 0.023* |
| C3 | 0.94174 (11) | 0.13662 (13) | 0.48221 (10) | 0.0220 (3) |
| H3 | 0.9523 | 0.0660 | 0.4742 | 0.026* |
| C4 | 0.90004 (11) | 0.16929 (13) | 0.55317 (10) | 0.0213 (3) |
| H4 | 0.8837 | 0.1221 | 0.5940 | 0.026* |
| C5 | 0.88317 (10) | 0.27220 (13) | 0.56245 (9) | 0.0194 (3) |
| H5 | 0.8550 | 0.2953 | 0.6105 | 0.023* |
| C6 | 0.90643 (10) | 0.34411 (12) | 0.50271 (9) | 0.0167 (3) |
| C7 | 0.87494 (10) | 0.44702 (13) | 0.51703 (9) | 0.0172 (3) |
| H7 | 0.8527 | 0.4611 | 0.5695 | 0.021* |
| C8 | 0.83000 (10) | 0.61616 (12) | 0.49269 (9) | 0.0178 (3) |
| H8A | 0.8766 | 0.6657 | 0.5100 | 0.021* |
| H8B | 0.7895 | 0.6024 | 0.5389 | 0.021* |
| C9 | 0.77532 (10) | 0.66006 (12) | 0.42318 (9) | 0.0172 (3) |
| H9A | 0.7296 | 0.6095 | 0.4058 | 0.021* |
| H9B | 0.7426 | 0.7214 | 0.4419 | 0.021* |
| C10 | 0.88602 (10) | 0.77994 (12) | 0.37278 (9) | 0.0164 (3) |
| H10A | 0.9254 | 0.7662 | 0.4198 | 0.020* |
| H10B | 0.8440 | 0.8357 | 0.3874 | 0.020* |
| C11 | 0.94408 (10) | 0.81319 (12) | 0.30220 (9) | 0.0158 (3) |

supplementary materials

| | | | | |
|------|--------------|--------------|-------------|------------|
| H11A | 0.9765 | 0.8768 | 0.3162 | 0.019* |
| H11B | 0.9899 | 0.7602 | 0.2906 | 0.019* |
| C12 | 0.82875 (10) | 0.74064 (12) | 0.21146 (9) | 0.0166 (3) |
| H12A | 0.8674 | 0.6825 | 0.1954 | 0.020* |
| H12B | 0.7878 | 0.7567 | 0.1660 | 0.020* |
| C13 | 0.77292 (10) | 0.71146 (12) | 0.28467 (9) | 0.0158 (3) |
| H13A | 0.7321 | 0.7684 | 0.2992 | 0.019* |
| H13B | 0.7350 | 0.6514 | 0.2719 | 0.019* |

Atomic displacement parameters (\AA^2)

| | U^{11} | U^{22} | U^{33} | U^{12} | U^{13} | U^{23} |
|-----|--------------|--------------|--------------|---------------|---------------|---------------|
| Cd1 | 0.01279 (7) | 0.01314 (7) | 0.01412 (7) | 0.00111 (4) | 0.00214 (4) | 0.00129 (4) |
| Cl1 | 0.01838 (18) | 0.01817 (18) | 0.02346 (19) | -0.00298 (14) | -0.00124 (14) | -0.00369 (14) |
| Cl2 | 0.01453 (16) | 0.01461 (17) | 0.02495 (19) | -0.00003 (13) | 0.00517 (14) | 0.00176 (14) |
| O1 | 0.0201 (5) | 0.0189 (5) | 0.0186 (5) | 0.0057 (4) | 0.0045 (4) | 0.0040 (4) |
| N1 | 0.0132 (6) | 0.0189 (7) | 0.0164 (6) | 0.0015 (5) | 0.0010 (5) | -0.0002 (5) |
| N2 | 0.0117 (6) | 0.0146 (6) | 0.0153 (6) | -0.0007 (5) | 0.0005 (5) | 0.0009 (5) |
| N3 | 0.0153 (6) | 0.0127 (6) | 0.0166 (6) | -0.0006 (5) | 0.0005 (5) | 0.0007 (5) |
| C1 | 0.0134 (7) | 0.0180 (7) | 0.0192 (7) | 0.0003 (6) | -0.0030 (6) | 0.0024 (6) |
| C2 | 0.0174 (7) | 0.0190 (8) | 0.0222 (8) | 0.0013 (6) | -0.0020 (6) | 0.0017 (6) |
| C3 | 0.0178 (7) | 0.0175 (8) | 0.0306 (9) | -0.0017 (6) | -0.0083 (6) | 0.0054 (7) |
| C4 | 0.0167 (7) | 0.0244 (8) | 0.0229 (8) | -0.0052 (6) | -0.0065 (6) | 0.0098 (7) |
| C5 | 0.0147 (7) | 0.0273 (8) | 0.0161 (7) | -0.0045 (6) | -0.0034 (6) | 0.0050 (6) |
| C6 | 0.0143 (7) | 0.0198 (8) | 0.0158 (7) | -0.0019 (6) | -0.0024 (6) | 0.0034 (6) |
| C7 | 0.0128 (7) | 0.0241 (8) | 0.0147 (7) | -0.0013 (6) | 0.0000 (5) | 0.0003 (6) |
| C8 | 0.0183 (7) | 0.0195 (7) | 0.0156 (7) | 0.0017 (6) | 0.0035 (6) | -0.0006 (6) |
| C9 | 0.0139 (7) | 0.0179 (7) | 0.0198 (7) | 0.0011 (6) | 0.0040 (6) | 0.0009 (6) |
| C10 | 0.0153 (7) | 0.0168 (7) | 0.0172 (7) | -0.0021 (6) | 0.0004 (6) | -0.0023 (6) |
| C11 | 0.0139 (7) | 0.0155 (7) | 0.0179 (7) | -0.0019 (6) | -0.0009 (6) | 0.0003 (6) |
| C12 | 0.0164 (7) | 0.0157 (7) | 0.0177 (7) | -0.0023 (6) | -0.0025 (6) | -0.0004 (6) |
| C13 | 0.0124 (7) | 0.0157 (7) | 0.0192 (7) | -0.0007 (5) | -0.0020 (6) | 0.0009 (6) |

Geometric parameters (\AA , $^\circ$)

| | | | |
|---------|-------------|----------|-----------|
| Cd1—N1 | 2.2693 (13) | C4—C5 | 1.384 (2) |
| Cd1—O1 | 2.2740 (11) | C4—H4 | 0.9500 |
| Cd1—Cl2 | 2.4557 (4) | C5—C6 | 1.413 (2) |
| Cd1—Cl1 | 2.4904 (4) | C5—H5 | 0.9500 |
| Cd1—N2 | 2.5209 (13) | C6—C7 | 1.450 (2) |
| O1—C1 | 1.3042 (19) | C7—H7 | 0.9500 |
| N1—C7 | 1.288 (2) | C8—C9 | 1.522 (2) |
| N1—C8 | 1.4667 (19) | C8—H8A | 0.9900 |
| N2—C10 | 1.4779 (19) | C8—H8B | 0.9900 |
| N2—C9 | 1.4816 (19) | C9—H9A | 0.9900 |
| N2—C13 | 1.4833 (19) | C9—H9B | 0.9900 |
| N3—C12 | 1.4897 (19) | C10—C11 | 1.517 (2) |
| N3—C11 | 1.4943 (19) | C10—H10A | 0.9900 |
| N3—H3A | 0.889 (15) | C10—H10B | 0.9900 |

| | | | |
|-------------|--------------|---------------|-------------|
| N3—H3B | 0.887 (15) | C11—H11A | 0.9900 |
| C1—C2 | 1.419 (2) | C11—H11B | 0.9900 |
| C1—C6 | 1.432 (2) | C12—C13 | 1.518 (2) |
| C2—C3 | 1.379 (2) | C12—H12A | 0.9900 |
| C2—H2 | 0.9500 | C12—H12B | 0.9900 |
| C3—C4 | 1.398 (3) | C13—H13A | 0.9900 |
| C3—H3 | 0.9500 | C13—H13B | 0.9900 |
| N1—Cd1—O1 | 80.22 (4) | C5—C6—C7 | 115.51 (14) |
| N1—Cd1—C12 | 132.92 (3) | C1—C6—C7 | 124.80 (14) |
| O1—Cd1—C12 | 90.39 (3) | N1—C7—C6 | 127.33 (14) |
| N1—Cd1—C11 | 118.77 (3) | N1—C7—H7 | 116.3 |
| O1—Cd1—C11 | 102.57 (3) | C6—C7—H7 | 116.3 |
| C12—Cd1—C11 | 108.309 (15) | N1—C8—C9 | 109.30 (12) |
| N1—Cd1—N2 | 75.55 (4) | N1—C8—H8A | 109.8 |
| O1—Cd1—N2 | 155.52 (4) | C9—C8—H8A | 109.8 |
| C12—Cd1—N2 | 103.45 (3) | N1—C8—H8B | 109.8 |
| C11—Cd1—N2 | 92.25 (3) | C9—C8—H8B | 109.8 |
| C1—O1—Cd1 | 127.43 (9) | H8A—C8—H8B | 108.3 |
| C7—N1—C8 | 117.32 (13) | N2—C9—C8 | 112.31 (12) |
| C7—N1—Cd1 | 128.33 (11) | N2—C9—H9A | 109.1 |
| C8—N1—Cd1 | 113.90 (9) | C8—C9—H9A | 109.1 |
| C10—N2—C9 | 109.61 (12) | N2—C9—H9B | 109.1 |
| C10—N2—C13 | 107.97 (12) | C8—C9—H9B | 109.1 |
| C9—N2—C13 | 108.04 (11) | H9A—C9—H9B | 107.9 |
| C10—N2—Cd1 | 118.96 (9) | N2—C10—C11 | 111.59 (12) |
| C9—N2—Cd1 | 99.25 (9) | N2—C10—H10A | 109.3 |
| C13—N2—Cd1 | 112.30 (9) | C11—C10—H10A | 109.3 |
| C12—N3—C11 | 111.41 (12) | N2—C10—H10B | 109.3 |
| C12—N3—H3A | 110.6 (13) | C11—C10—H10B | 109.3 |
| C11—N3—H3A | 109.8 (12) | H10A—C10—H10B | 108.0 |
| C12—N3—H3B | 111.3 (14) | N3—C11—C10 | 110.68 (12) |
| C11—N3—H3B | 107.1 (13) | N3—C11—H11A | 109.5 |
| H3A—N3—H3B | 106.4 (19) | C10—C11—H11A | 109.5 |
| O1—C1—C2 | 120.06 (14) | N3—C11—H11B | 109.5 |
| O1—C1—C6 | 123.22 (14) | C10—C11—H11B | 109.5 |
| C2—C1—C6 | 116.72 (14) | H11A—C11—H11B | 108.1 |
| C3—C2—C1 | 122.04 (16) | N3—C12—C13 | 110.73 (12) |
| C3—C2—H2 | 119.0 | N3—C12—H12A | 109.5 |
| C1—C2—H2 | 119.0 | C13—C12—H12A | 109.5 |
| C2—C3—C4 | 121.21 (16) | N3—C12—H12B | 109.5 |
| C2—C3—H3 | 119.4 | C13—C12—H12B | 109.5 |
| C4—C3—H3 | 119.4 | H12A—C12—H12B | 108.1 |
| C5—C4—C3 | 118.25 (15) | N2—C13—C12 | 110.34 (12) |
| C5—C4—H4 | 120.9 | N2—C13—H13A | 109.6 |
| C3—C4—H4 | 120.9 | C12—C13—H13A | 109.6 |
| C4—C5—C6 | 122.12 (15) | N2—C13—H13B | 109.6 |
| C4—C5—H5 | 118.9 | C12—C13—H13B | 109.6 |
| C6—C5—H5 | 118.9 | H13A—C13—H13B | 108.1 |
| C5—C6—C1 | 119.56 (15) | | |

supplementary materials

Hydrogen-bond geometry (Å, °)

| <i>D</i> —H··· <i>A</i> | <i>D</i> —H | H··· <i>A</i> | <i>D</i> ··· <i>A</i> | <i>D</i> —H··· <i>A</i> |
|-----------------------------|-------------|---------------|-----------------------|-------------------------|
| N3—H3A···C11 ⁱ | 0.89 (2) | 2.53 (2) | 3.3108 (14) | 146.(2) |
| N3—H3A···C12 ⁱⁱ | 0.89 (2) | 2.78 (2) | 3.2689 (14) | 116.(2) |
| N3—H3B···O1 ⁱⁱ | 0.89 (2) | 1.80 (2) | 2.6743 (17) | 167.(2) |
| C11—H11B···C12 | 0.99 | 2.70 | 3.6372 (16) | 157. |
| C13—H13B···C11 | 0.99 | 2.78 | 3.4302 (16) | 124. |
| C4—H4···C11 ⁱⁱⁱ | 0.95 | 2.80 | 3.7165 (17) | 161. |
| C13—H13A···C11 ⁱ | 0.99 | 2.82 | 3.5851 (16) | 134. |

Symmetry codes: (i) $-x+3/2, y+1/2, z$; (ii) $-x+2, y+1/2, -z+1/2$; (iii) $x, -y+1/2, z+1/2$.

Fig. 1

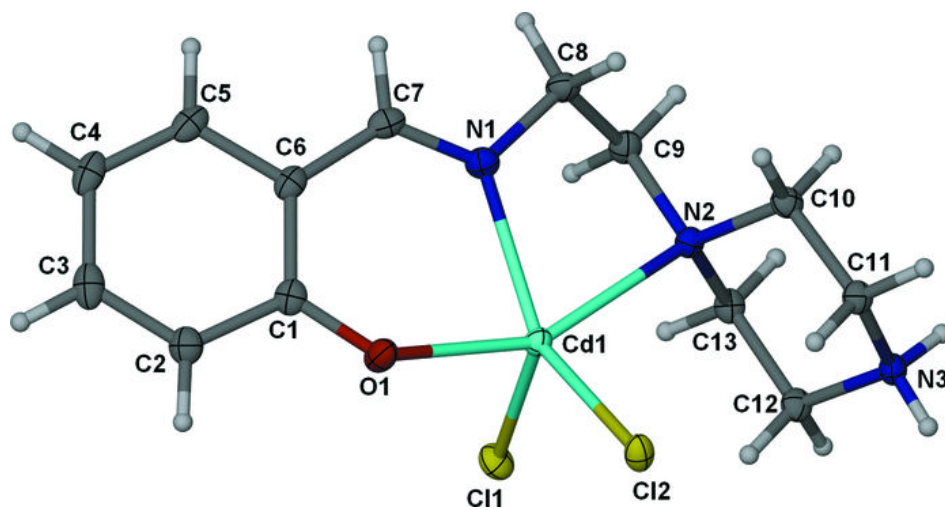


Fig. 2

