

Clinical effectiveness of a patient decision aid to improve decision quality and glycaemic control in people with diabetes making treatment choices: a cluster randomised controlled trial (PANDAs) in general practice

Nigel Mathers,¹ Chirk Jenn Ng,² Michael Joseph Campbell,³ Brigitte Colwell,¹ Ian Brown,⁴ Alastair Bradley¹

To cite: Mathers N, Ng CJ, Campbell MJ, *et al*. Clinical effectiveness of a patient decision aid to improve decision quality and glycaemic control in people with diabetes making treatment choices: a cluster randomised controlled trial (PANDAs) in general practice. *BMJ Open* 2012;**2**:e001469. doi:10.1136/bmjopen-2012-001469

► Prepublication history and additional material for this paper are available online. To view these files please visit the journal online (<http://dx.doi.org/10.1136/bmjopen-2012-001469>).

Received 3 July 2012
Accepted 1 October 2012

This final article is available for use under the terms of the Creative Commons Attribution Non-Commercial 2.0 Licence; see <http://bmjopen.bmj.com>

For numbered affiliations see end of article

Correspondence to

Nigel Mathers;
n.mathers@sheffield.ac.uk

ABSTRACT

Objective: To determine the effectiveness of a patient decision aid (PDA) to improve decision quality and glycaemic control in people with diabetes making treatment choices using a cluster randomised controlled trial (RCT).

Design: A cluster RCT.

Setting: 49 general practices in UK randomised into intervention (n=25) and control (n=24).

Participants: *General practices* Inclusion criteria: >4 medical partners; list size >7000; and a diabetes register with >1% of practice population. 191 practices assessed for eligibility, and 49 practices randomised and completed the study. *Patients* People with type 2 diabetes mellitus (T2DM) taking at least two oral glucose-lowering drugs with maximum tolerated dose with a glycosolated haemoglobin (HbA1c) greater than 7.4% (IFCC HbA1c >57 mmol/mol) or advised in the preceding 6 months to add or consider changing to insulin therapy. Exclusion criteria: currently using insulin therapy; difficulty reading or understanding English; difficulty in understanding the purpose of the study; visual or cognitive impairment or mentally ill. A total of 182 assessed for eligibility, 175 randomised to 95 intervention and 80 controls, and 167 completion and analysis.

Intervention: Brief training of clinicians and use of PDA with patients in single consultation.

Primary outcomes: Decision quality (Decisional Conflict Scores, knowledge, realistic expectations and autonomy) and glycaemic control (glycosolated haemoglobin, HbA1c).

Secondary outcomes: Knowledge and realistic expectations of the risks and benefits of insulin therapy and diabetic complications.

Results: Intervention group: lower total Decisional Conflict Scores (17.4 vs 25.2, p<0.001); better knowledge (51.6% vs 28.8%, p<0.001); realistic expectations (risk of 'hypo', 'weight gain', 'complications'; 81.0% vs 5.2%, 70.5% vs 5.3%,

ARTICLE SUMMARY

Article focus

- Does the use of the PANDAs decision aid in general practice improve decision quality and glycaemic control in people who are making treatment choices about their type 2 diabetes mellitus (T2DM) treatment, including whether or not to start insulin?

Key messages

- Patient decision aids provide evidence-based information about treatment options, help patients to clarify their values and guide them systematically to make an informed decision.
- The use of the PANDAs decision aid by doctors and nurses in usual NHS general practice with people who have type 2 diabetes mellitus and are making treatment choices reduces decision conflicts and improves knowledge, realistic expectations and patients' involvement in decision-making.
- Glycosolated haemoglobin levels were reduced in both groups at 6 months when compared to baseline (0.24% controls and 0.37% intervention) with a non-significant mean difference between the two groups of 0.351, p=0.117.

26.3% vs 5.0% respectively, p<0.001); and were more autonomous in decision-making (64.1% vs 42.9%, p=0.012). No significant difference in the glycaemic control between the two groups.

Conclusions: Use of the PANDAs decision aid reduces decisional conflict, improves knowledge, promotes realistic expectations and autonomy in people with diabetes making treatment choices in general practice.

ISRCTN Trials Register Number: 14842077.

ARTICLE SUMMARY

Strengths and limitations of this study

- This study was underpowered to detect a minimally, clinically important difference in glycaemic control between the two groups due to slow recruitment.
- There was no blinding in this study due to the nature of the intervention which may have influenced the outcome assessment.
- This was a pragmatic trial and there may have been variations in how the decision aid was used in different general practices which may have diluted the effect of the study.

INTRODUCTION

Diabetes mellitus is a growing health problem in England with a total of 2.4 million people (5.5% of population) living with the disease in 2011.¹ Diabetes currently accounts for 10% of all NHS expenditure.² However, overall diabetes control is less than satisfactory. In 2008/2009, 67% of people with type 2 diabetes mellitus (T2DM) achieved a glycosolated haemoglobin (HbA1c) of less than 7.5% (IFCC HbA1c 58 mmol/mol).³

The UK Prospective Diabetes Study (UKPDS) has established the importance of maintaining good blood glucose control in patients with T2DM. For every 1.0% increase in HbA1c, there is an increase, in risk, of 14% for myocardial infarction, 21% for diabetes-related deaths and 37% for microvascular complications.⁴ In the same study, it was reported that only 25% were able to achieve good glycaemic control with monotherapy after 9 years of the trial. Most patients will require combination therapy, including insulin, 5–10 years after diagnosis.⁵

Currently, the NICE guidelines recommend a combination of metformin and insulin secretagogues in those who have inadequate blood glucose control with monotherapy. For those for whom dual therapy has been unsuccessful, either insulin or a thiazolidinedione should be added to optimise glycaemic control.³ Frequently, this poses a clinical dilemma for both patients and healthcare providers; both parties need to agree which next treatment option to pursue and this includes whether or not to start insulin therapy. However, patients may be fearful of needles and the side effects of insulin (eg, hypoglycaemia); they need to acquire new skills; change their daily routine and address the challenge of glucose monitoring.⁶ Similarly, doctors may be hesitant to prescribe insulin due to their own lack of relevant skills, time pressures and a fear of increasing the risk of side effects.^{7–8} In this category of patients, the decision-making process is a complex one. Studies have shown that patients usually make decisions based on emotions such as trust, rather than on the information given by their healthcare providers.⁹ For their part, doctors do not necessarily follow evidence-based guidelines¹⁰ and it was in this context that the PANDAs decision aid was developed to facilitate shared

decision-making between clinicians and patients when making decisions about the treatment of their diabetes at this stage of their illness. The development of the PANDAs decision aid will be described elsewhere.

Patient decision aids (PDAs) are tools that provide evidence-based information about treatment options, help patients to clarify their values and guide them systematically to make an informed decision. PDAs have been shown to improve knowledge, realistic expectations, value-decision concordance and patient involvement in decision-making.¹¹

The primary research question was “Does the use of the PANDAs decision aid improve decision quality in patients with T2DM who are making a decision whether or not to start insulin in general practice?”

The study focused on people with T2DM who had poor glycaemic control (HbA1c >7.4 mmol/l or IFCC HbA1c >57 mmol/mol) and who, despite receiving optimal oral glucose lowering therapy, required ‘step-up’ treatment. A cluster randomised controlled trial (RCT) was carried out to evaluate the clinical effectiveness of the decision aid on decision quality and glycaemic control.

METHODS

The setting for this study was general practices in Sheffield, Rotherham and Doncaster with recruitment being undertaken through the National Institute for Health Research Primary Care Research Network (PCRN) and the Cutler Group of South Yorkshire Research Practices. The recruitment of practices and patients began in 2008 and the data collection ended in 2011.

Practices were invited to take part by postal invitation following a publicity campaign using a modified viral marketing technique involving sequential non-specific PANDAs post cards (‘PANDAs are coming’) to ‘pique’ interest, followed by increasingly informative flyers (figure 1).¹²

The inclusion criteria for general practices were: >4 medical partners; list size >7000; and a diabetes register with >1% of practice population. The participating general practices were asked to screen their computerised diabetes register for eligible patients with T2DM (aged >21 years). The inclusion criteria were: people with T2DM who were taking at least two oral glucose-lowering drugs with maximum tolerated dose and had a latest HbA1c greater than 7.4% (IFCC HbA1c >57 mmol/mol) or had been advised in the preceding 6 months to add or consider changing to insulin therapy. The exclusion criteria were: patients who were currently using insulin therapy; had difficulty reading or understanding English; had difficulty in understanding the purpose of the study; had visual or cognitive impairment and were mentally ill.

The patients were contacted by a letter from their general practitioners (GPs) and invited to participate in this study. If they agreed, they were sent details of the study (including the information sheet) and asked to attend an appointment at their regular practice where

Figure 1 PANDAs postcard: an example of the viral marketing strategy to recruit practices.



consent to the study was obtained by the researchers. Practices were incentivised to take part in the trial, receiving a nominal payment to cover legitimate expenses.

Randomisation and concealment

This was a pragmatic trial and all eligible and willing practices were randomly allocated by a computer to two groups: the intervention group used the PANDAs decision aid when making the specified treatment choices and the control group delivered usual care. We stratified the practices according to the Practice list size. Each practice was considered a cluster and all patients within the cluster received either the intervention or usual care. The practices were the units of randomisation, since it would have been difficult to allocate two patients in the same practice to different arms of the trial. Blinding of the intervention and assessment of the process measures were not feasible in view of the nature of the intervention studied. A statistician generated the random allocation sequence while a secretary who was not involved in the research study assigned participants to either the intervention or control groups. A researcher and a research nurse enrolled the participants into the study.

Intervention and control groups

This was a complex intervention comprising three components: PDA; healthcare professional training workshop and use of the PDA in a consultation. The development of the intervention was based on the UKMRC framework for the development and evaluation of complex interventions¹³ and this will be reported in another paper. The doctors and/or the nurses who were primarily involved in the diabetes care of the practice attended a short training session lasting between 1 and 2 h on how to use the PANDAs decision aid. The training topics covered included the principles of shared

decision-making, the importance and clinical effectiveness of decision aids, the evidence for various treatment options for poorly controlled T2DM and essential skills in risk communication.¹⁴

The patient participants were given the PANDAs decision aid (box 1) by the researcher to read and complete prior to the consultation in the waiting room. This was followed by the consultation with the GP or the practice nurse facilitated by the use of the PANDAs decision aid. In the control group, the GP and the practice nurse did not receive any training and the PANDAs decision aid was not used. The GPs or the nurses conducted a normal consultation with the patient.

Outcome measures and follow-up

Primary outcome measures

The primary outcome measures were decisional conflict based on the Decisional Conflict Scale score,^{15 16} (immediate) used as an indicator of decision quality and

Box 1 Content of the PANDAs decision aid

The PANDAs decision aid contains the following information in line with the International Patient Decision Aid Standards criteria:

1. Information about the insulin and other treatment options
 - Reasons for starting insulin
 - The procedure of insulin injection
 - Common concerns about insulin
 - Treatment options: make no change; lifestyle modification; insulin therapy
2. Present probabilities of outcomes
 - The advantages and disadvantages of each option were described in words, numbers and pictures ('smiley faces')
3. Patient value clarifications
 - A list of patients' values about the advantages and disadvantages of insulin therapy
4. Structured guidance

Cluster RCT of decision aid to improve decision quality in people with diabetes

glycaemic control (glycosolated haemoglobin, HbA1c) at 6 months.

Secondary outcome measures

Knowledge and realistic expectations of the risks and benefits were assessed by asking the patients to indicate their perceived chance of experiencing the side effects of insulin therapy and diabetic complications.

Operational definitions of the secondary outcome measures were agreed as (1) knowledge: about the treatment option that is most effective in reducing blood glucose level and diabetic complications; (2) realistic expectations: a self-reported chance of experiencing hypoglycaemia, gaining weight and developing complications; (3) preference option: preferred treatment options of initiate insulin, adhere to diabetes advice more regularly or make no change; (4) participation in decision-making: using the Control Preference Scale Scores and (5) regret: using the Regret Scale Scores.

The secondary measures were other decision quality indicators (knowledge of treatment options, realistic expectation, preference option, proportion undecided, participation in decision-making); duration of consultation; and outcome of decision-making (regret and persistence with the chosen option). Persistence with the chosen option is a single self-reported item which asked the participant what their treatment was 6 months after the intervention. They were considered to be persistent with their decision if there was no change in the treatment in the past 6 months.

The practice provided the baseline and 6-month follow-up data. Baseline data comprised practice and clinician profile, patients' socio-demography, diabetes profile (duration, complication, prescription, glycaemic control), comorbidities (eg, hypertension, coronary artery disease, dyslipidaemia and chronic kidney disease) and previous T2DM education.

Immediate postintervention data collected were decision quality indicators and duration of consultation. Six-month data comprised HbA1c, regret score and persistence with the decision.

Instruments

Decisional Conflict Scale

The Decisional Conflict Scale (DCS) measures personal perceptions of (1) uncertainty in choosing options; (2) modifiable factors contributing to uncertainty such as feeling uninformed, unclear about personal values and unsupported in decision-making; and (3) effective decision-making such as feeling the choice is informed, value-based, likely to be implemented and expressing satisfaction with the choice. It was derived from the decisional conflict construct.¹⁷ The traditional 16-item DCS with five response categories was used in this study. There are five subscales: 'uncertainty subscale'; 'informed subscale'; 'values clarity subscale'; 'support subscale' and 'effective decision subscale'.¹⁵ The DCS has been shown to be reliable and is correlated with the constructs of knowledge,

regret and discontinuance, and has the ability to discriminate between those who make and delay decisions. Scores lower than 25 are associated with implementing decisions while scores exceeding 37.5 are associated with decisional delay or feeling unsure about implementation.¹⁶

Control Preference Scale

The Control Preference Scale (CPS) aims to measure the extent to which patients prefer or are involved in decision-making during a clinical consultation. It measures the preferred or actual role in decision-making by asking a single question which contains five items: two represent active or patient controlled role; one represents a shared or collaborative role; and two items represent a passive or practitioner controlled role.¹⁸ It has proven validity and reliability in both general public and patients with medical conditions.^{18 19} A recent study found a good inter-rater reliability and good agreement between self and researcher ratings on CPS.²⁰

Regret Scale

This scale measures 'distress or remorse after a (health-care) decision'. It is a five-item scale with five responses (1 strongly agree to 5 strongly disagree). Regret is measured at a point where the respondent can reflect on the effects of the decision that has been made. A score of 0 means no regret while a score of 100 means high regret. The Regret Scale correlates with satisfaction with the decision, decisional conflict and overall quality of life.²¹

Sample size and statistical analysis (HbA1c)

Assuming an intracluster correlation coefficient of 0.047 for HbA1c²² and a cluster sample size of 5 patients per practice, with 80% power and 5% (two-sided) significance, 160 patients in each group are required to allow the detection of 0.5% (SD 1.5%) difference in HbA1c.²³ The total number of practices required, therefore, was estimated to be 64. When using the total DCS score as the primary outcome measure and using a similar method to calculate sample size, the total number of participants needed was 86 and the total cluster size was estimated to be 17. We aimed for the larger sample size for the design of this study.

The outcome variables were treated as continuous and we used multiple regressions with generalised estimating equations (GEE) and exchangeable correlation to allow for clustering. Multiple logistic regression with GEE was used for binary outcomes in the secondary analysis. If a patient in the intervention arm refused to use the decision aid, they were still included in the intervention group for analysis and were analysed according to the intention-to-treat principle.

RESULTS

Study practices profile

Forty-nine general practices were recruited into the study. The practices in both arms of the study were well

Cluster RCT of decision aid to improve decision quality in people with diabetes

Table 1 Study practice profile (mean and range)

	Intervention	Control
Number of practices	25	24
List size	7510 (3129–20 900)	7325 (1,974–13 500)
People with diabetes	350 (96–912)	356 (143–634)
Number of partners	5 (1–13)	5 (2–10)
Number of practice nurses	3 (1–6)	3 (1–5)
IMD score	30.35 (range 8.9–59.5)	30.20 (range 6.5–55)

IMD, Index of Multiple Deprivation.

matched in terms of mean list size, mean diabetes list size, mean number of partners and practice nurses and mean Index of Multiple Deprivation Scores (table 1).

Participants

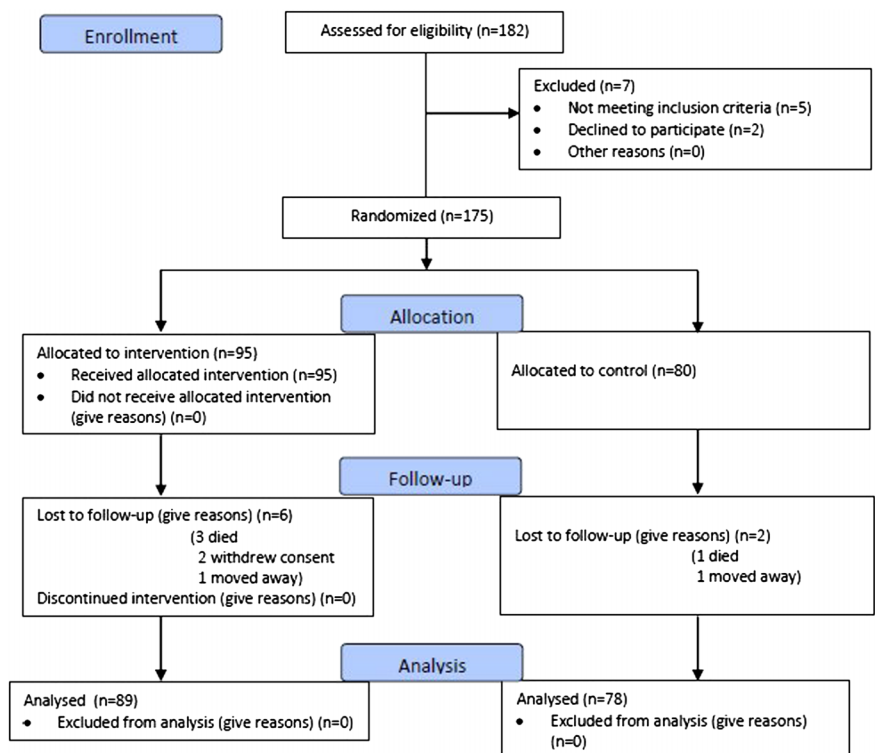
In total, 182 patients were assessed for eligibility, of whom seven were excluded for not meeting the inclusion criteria (n=5), or declined to participate (n=2). A total of 175 patients were randomised, of whom 95 were allocated to the intervention group and 80 to the control group. Six participants in the intervention group were lost to follow-up (three died, one moved away and two withdrew their consent), and two participants in the control group were also lost to follow-up (one died

and one moved away). The results from 167 participants were analysed (89 interventions and 78 controls; figure 2).²⁴

Table 2 compares the sociodemographic and clinical profiles of patients between intervention and control groups. The mean age of the patients was 64.6 years (range 39–87). The patients in the intervention group and control group were broadly similar except that the patients in the intervention group were older and more likely to have coronary heart disease. In both groups the patients were more likely to consult nurses for diabetes related conditions than a doctor (mean number of consultations with nurses and GPs were 2.03 and 1.15, respectively). The mean length of the initial consultation for patients, when entering the study, in the intervention and control groups was 15.31 and 16.95 min, respectively (mean difference 1.67 min, 95% CI 0.93 to 4.27 min).

Decisional conflict

The mean difference between the intervention and the control groups on the total score for decisional conflict was -7.72 (95% CI -12.5 to -2.97). The distribution of decisional conflict subscores are shown in table 3. The total and subscores for every decisional conflict domain, apart from the support subscore, were significantly lower in the intervention group. The difference in uncertainty, informed, value clarity and effective decision subscores between the intervention and control groups remained

Figure 2 PANDAs CONSORT flow diagram.

Cluster RCT of decision aid to improve decision quality in people with diabetes

Table 2 Baseline patient sociodemographic and clinical information of the intervention and control groups (mean and range unless otherwise stated)

	Intervention	Control
Sociodemographic profile		
Number	95	80
Age (years)	66 (39–82)	62 (42–87)
Male (%)	50 (52%)	46 (57%)
Duration of education (years) (SD)	12.22 (4.83) (8–45*)	11.49 (2.74) (2–22)
Ethnicity white (%)	85 (89.5%)	71 (88.8%)
Clinical profile		
Duration of diabetes (years) (SD)	8.4 (4.1) (1–25)	7.07 (3.83) (1–16)
HbA1c (IFCC HbA1c mmol/mol) in past 12 months (%) (SD)	8.6 {70} (1.9) (7.4–13.1) {57–120}	8.8 {73} (0.98) (7.5–11.5) {58–102}
Number with diabetic complications (%)		
Coronary heart disease	29/93 (31.1)	13/80 (16.2)
Peripheral vascular disease	3/93 (3.22)	3/80 (3.75)
Stroke	8/93 (8.6)	5/80 (6.25)
Retinopathy	20/93 (21.5)	10/80 (12.5)
Nephropathy	5/93 (5.37)	10/80 (12.5)
Neuropathy	5/93 (5.37)	3/80 (3.75)
Number with comorbidities (%)		
Hypertension	58/93 (62.3)	43/80 (53.75)
Dyslipidaemia	52/93 (55.9)	38/80 (47.5)
Health service utilisation		
Number of diabetes-related visits to the general practice in the past 6 months (SD)		
General practitioners	0.92 (1.13) (0–5)	1.41 (1.68) (0–11)
Nurse	2.15 (1.84)	1.89 (1.36)
Number of diabetes-related visits to the hospital in the past 6 months (SD)		
Length of consultation (min)	15.31 (2–39)	16.95 (5–45)

*Self-report (this figure includes self-taught continuing education outwith a formal educational programme).

statistically significant after adjusting for differences in age, education and gender.

Glycosolated haemoglobin

Table 4 shows the HbA1c levels for both the intervention and the control groups at 6 months. HbA1c levels reduced in both groups at 6 months compared to baseline (0.24% in the control group and 0.37% in the intervention group). The mean difference in the HbA1c level at 6 months between the two groups was 0.351

(95% CI –0.088 to 0.789, $p=0.117$) after adjusting for age, education, gender, baseline HbA1c, insulin status and clustering.

Secondary outcomes

Knowledge

A comparison of the proportions of patients who answered the ‘knowledge’ questions correctly between the intervention and the control groups showed there were more patients in the intervention group who

Table 3 Comparison of decisional conflict scores between the intervention and control groups (0=no decisional conflict, 100=maximum decisional conflict)

Subscore	Intervention	Control	Mean difference unadjusted	Mean difference adjusted*	95% CI, p Value
Uncertainty	20.1 (16.6)	29.4 (20.8)	–9.29	–8.72	–14.9 to –2.53, $p=0.006$
Informed	18.1 (13.3)	26.0 (16.6)	–7.65	–8.69	–13.3 to –4.10, $p<0.001$
Values clarity	16.7 (13.9)	26.7 (18.2)	–9.74	–9.84	–14.8 to –4.84, $p<0.001$
Support	17.4 (13.1)	20.8 (15.3)	–3.41	–3.66	–8.58 to 1.25, $p=0.144$
Effective decision	16.1 (14.4)	23.3 (15.2)	–9.70	–9.80	–16.8 to 2.75, $p=0.006$
Total score	17.4 (12.6)	25.2 (14.9)	–7.67	–7.72	–12.5 to –2.97, $p<0.001$

*Adjusted for clustering, insulin initiation, age, gender and education level.

Cluster RCT of decision aid to improve decision quality in people with diabetes

Table 4 Effect of the PANDAs decision aid on HbA1c at 6 months

Intervention	Control	Mean difference in HbA1c unadjusted	Mean difference in HbA1c adjusted*	95% CI
8.64 (SD 1.37)	8.40 (SD 1.31)	0.244	0.351	-0.088 to 0.789

*Adjusted for age, education, gender, baseline HbA1c, insulin status and clustering. $p=0.117$.

answered the questions correctly compared to those who received 'usual care' (table 5).

Realistic expectations

Patients who used the decision aid had significantly more realistic expectations about the side effects of insulin therapy compared to those who did not (table 5). Almost all patients in the intervention group, compared to those of the control group, knew correctly their risk of hypoglycaemia (81% vs 5.2%, $p<0.001$) and weight gain (70.5% vs 5.3%, $p<0.0010$). More people knew their risk of complications in the intervention group if they were to take insulin, although most still got it wrong (26.3% vs 5.0%, $p<0.001$).

Preferred option

Table 6 shows that the preferred choices of patients in the intervention and control groups were similar after consultation.

Proportion undecided

Table 7 shows that patients in the intervention group were over three times more likely to change from undecided to decided than in the control group, although, this was not statistically significant ($p=0.15$).

Participation in decision-making

There were significant differences in patients' decision-making role between the intervention and control groups ($p=0.012$ χ^2 ; table 8). It may be seen that a smaller proportion of patients in the intervention group described their decision about their diabetes treatment as 'passive' or 'collaborative'.

However, patients in the intervention arm were more likely to demonstrate autonomy in their decision-making about their treatment compared to the control group (64% compared to 43%). Further analysis showed that an individual patient was 1.23 (95% CI 1.05 to 1.44, $p=0.008$) times more likely to make an 'autonomous' decision using the PANDAs decision aid when the intervention and control groups are compared, allowing for age and gender.

Regret and persistence with decision

Table 9 shows that there was no difference at 6 months in the Regret Scale, but that patients in the intervention group were rather more likely to persist with their chosen option.

Acceptability

Most of the PDA users found the PDA useful. When asked about their opinion of the PDA, 83.2% ($n=88$), 86.3% ($n=89$), 86.3% ($n=89$) and 88.4% ($n=90$) thought that the PDA had helped them to recognise that a decision needs to be made; know that the decision depends

Table 5 Secondary outcomes: knowledge and realistic expectations (questions answered correctly)

	Intervention decision aid	Control usual care	Unadjusted OR	Adjusted* OR (95% CI)	ICC	p Value
Knowledge						
Number	95	80				
Which choice has the greatest chance of lowering your blood sugar?	49 (51.6%)	23 (28.8%)	2.63	1.31 (1.14 to 1.50)	0.071	<0.001
Which choice has the greatest chance of lowering your complications?	29 (30.5%)	23 (28.8%)	1.09	1.20 (0.07 to 19.05)	0.202	0.90
Realistic expectations						
If you take insulin, about how many times might you experience 'hypos' in a year?	77/95 (81.0%)	4/75 (5.2%)	75.9	†	–	<0.001‡
If you take insulin, about how much more weight might you gain in a year?	67/95 (70.5%)	4/75 (5.3%)	42.5	†	–	<0.001‡
Out of 100 people like you who take insulin, how many may get complications in 5 years?	25/95 (26.3%)	4/80 (5%)	6.8	†	–	<0.001‡

*Adjusted for clustering, insulin initiation, age, gender and education level.

†Numbers answering correctly in the control group were too few to control for clustering.

‡ χ^2 p value.

Cluster RCT of decision aid to improve decision quality in people with diabetes

Table 6 Preferred choices of patients in intervention and control groups postconsultation

	Make no change	Follow the diabetes advice more regularly	Start insulin	I am not sure	Total
Control	33 (42.4%)	29 (37.1%)	9 (11.5%)	7 (9%)	78
Intervention	32 (34.8%)	38 (41.3%)	17 (18.5%)	5 (5.4%)	92
Total	65	67	26	12	170

($\chi^2_3=2.88$, $p=0.410$).

on what matters most to them; think about how involved they wanted to be in the decision; and prepare to talk to the nurse or doctor about what mattered most to them', respectively.

DISCUSSION

The PANDAs decision aid was designed to facilitate decision-making between clinicians and their patients with T2DM who were taking at least two oral glucose-lowering drugs at maximum tolerated dose, had a high HbA1c level and were considering future treatment options including the introduction of insulin. Its evaluation was based on the International Patient Decision Aids Standards (IPDAS) recommendations²⁵ and the use of the ODSF Framework.²⁶ The PANDAs trial provides good evidence not only for the clinical effectiveness of decision aids in usual NHS general practice but also for the utility and feasibility of use by both nurses and doctors. In addition, the PANDAs decision aid itself and its use were both effective and acceptable to people with diabetes making treatment choices during clinical consultations.

Table 7 Comparison of the proportion of patients who remained undecided between the intervention and control group immediately after intervention

	Intervention	Control	OR	95% CI
Undecided (preconsultation)	23	14		
Undecided (postconsultation)	8*	9*		
Odds in favour of changing: undecided (pre) to decided (post)/ decided (pre) to undecided (post)	18/3†	11/6†	3.27	0.69 to 16.3 ($p=0.15$)

*This figure of eight patients includes five who remained 'undecided' postconsultation and includes three patients who moved from 'decided' preconsultation to 'undecided' postconsultation. Similarly for the nine 'undecided' postconsultation patients in the control group, three remained 'undecided' and six had moved from 'decided' to 'undecided'.

†This ratio means that a total of 18 patients changed from 'undecided' to 'decided' in the intervention group and that 3 moved in the opposite direction (ie, a net total of 15 patients (18–3) had 'decided' postconsultation). In the control group the corresponding numbers were 11 and 6 (ie, a net total of 5 patients (11–6) had 'decided' postconsultation).

Decision quality

The findings from the PANDAs trial support the results of other studies which have evaluated the clinical effectiveness of decision aids^{11–15} in demonstrating an improvement in decision quality when a decision aid is used in clinical consultations.

Decisional conflict scores, for example, when adjusted for age, education and gender were significantly lower in the intervention group postconsultation when compared to the controls, apart from the support subscore. It is interesting to note that the support subscore in the intervention group was not significantly lower than the control group—this may be the result of a 'ceiling effect' since patients in both the intervention and control groups may already have been receiving very good diabetes care from their general practices.

Other indicators of decision quality used in the study also demonstrated an improvement when PANDAs was used in consultations—there was, for example, a highly significant difference in the knowledge of people about which particular treatment choice had the greatest chance of lowering blood sugar in those who used the decision aid—although this was not the case when the chance of insulin in lowering complications was considered—here no difference in knowledge was observed. Some patients believe that insulin itself causes complications as a result of misperception^{27–28} and this may explain why knowledge did not improve in the intervention group. However, highly significant differences were observed between the intervention and control groups in all the three domains of realistic expectations ('hypos', weight gain and complications) supporting the notion that the PANDAs decision aid ensured that people were fully informed about the potential risks of each option when making their treatment choices.

As far as autonomy was concerned, patients in the intervention arm were more likely to make an autonomous decision using PANDAs when the intervention and control groups were compared allowing for both age and gender. This is consistent with the findings of other studies.^{29–30}

These findings of an improvement in decision quality, when a decision aid is used in clinical consultations in other conditions and contexts, are also supported by a large number of other studies.^{23–31}

Decisional outcomes

The glycaemic control improved in both groups 6 months after the intervention although no significant

Cluster RCT of decision aid to improve decision quality in people with diabetes

Table 8 Decision-making roles of patients in the intervention and control groups, postconsultation with their doctor/nurse

	How did you make your decision about your diabetes treatment? (n=169)			Total
	Passive	Collaborative	Autonomous	
Control	16 (21%)	28 (36%)	33 (43%)	77 (100%)
Intervention	8 (9%)	25 (27%)	59 (64%)	92 (100%)

($\chi^2=8.9$, df=2, p=0.012).

difference in glycaemic control was observed between the two groups. Some GPs in the study expressed concern at the start of the trial that glycaemic control could deteriorate in some patients in the intervention group as a result of them choosing not to start insulin. Further study is necessary to confirm this as this study did not have sufficient power to detect the difference in glycaemic control.

Treatment decisions made using a decision aid should, of course, be ones that are both informed and value-based, and the PANDAs intervention was focused on the process of decision-making rather than the outcomes of those decisions. It is therefore important to note that PANDAs was not designed to persuade people to start treatment with insulin but to help them make an informed treatment decision which was consistent with their values and wishes.

Indeed, there was reduced decisional conflict within the intervention group compared to the control and the decisions which were made were far more likely to be autonomous in nature rather than passive. Participants in the intervention group were also significantly more likely to persist with their chosen option at 6 months. This supports the hypothesis that people who use a decision aid such as PANDAs are more likely to make an informed and value-based decision and are therefore more likely to persist with their treatment choice. Concordance with agreed treatment is, in turn, more likely to lead to better health outcomes and quality of life.

No significant difference was observed on the Regret Scale scores and although people in the intervention group were over three times more likely to change from undecided to decided (ie, come to a treatment decision after their consultation) in the control group, this difference was not statistically significant.

Finally, no significant difference was observed in the preferred choices (ie, the treatment decision they came

to) of the two groups although a higher proportion of people in the intervention group did choose to initiate insulin. However it is important to note that the use of a decision aid is not intended to produce a particular outcome but to support the patient making a treatment choice based on their knowledge and values. These findings are also consistent with current understanding of the anticipated decisional outcomes when a decision aid such as PANDAs is used in clinical consultations to make treatment choices.³¹

Impact on clinical practice

The results of the PANDAs trial demonstrate that the use of the decision aid in usual general practice by both practice nurses and GPs, provided the patient has the opportunity to complete their individualised decision aid prior to their consultation, does not require significant additional consultation time. Given the potential benefits of improved adherence to treatment choices and an improved therapeutic relationship between clinicians and their patients, this is likely to make the use of the decision aid acceptable to all parties in general practice, although, its use may require some initial 'investment' in consultation time. In particular, both clinician and patient satisfaction with their consultations, as well as the healthcare provided and received, are both likely to be increased. A further potential advantage is that the decision aid could be used by other clinical members of the primary care team (eg, healthcare assistants) potentially increasing the consultation time available to doctors and nurses for other patients. However, the efficient use of the decision aid in consultations may in part be attributed to the familiarity of the clinicians with the decision aid as a result of the brief training clinicians received at entry to the trial. In addition, this may also be due to the process by which the decision aid was developed with the active involvement of both clinicians

Table 9 Comparison of the decision Regret Score and persistence with chosen option between the intervention and usual care groups after 6 months

	Intervention	Control	Mean difference unadjusted	Mean difference adjusted*	p Value
Regret Score	44.63	44.57	0.06	0.22 (-2.48 to 2.93)	0.872
Persistence with chosen option	68.1%	56.3%	1.65†	1.17‡ (1.00 to 1.36)	0.041

*Adjusted for age, education, gender, baseline HbA1c, insulin status and clustering.

†Crude OR.

‡Adjusted OR.

Cluster RCT of decision aid to improve decision quality in people with diabetes

and people with diabetes to ensure that it was as 'user friendly' as possible. This involvement of users in the development of the decision aid and a process evaluation of its use in the consultation by both parties has been described elsewhere.³²

Health service utilisation

The PANDAs trial was a pragmatic one reflecting the reality of primary care diabetes clinics which are mainly run by practice nurses. The mean number of consultations with the nurses, for example, was greater than the mean number of consultations with the GPs and within the intervention group patients were more likely to use the PANDAs decision aid with the practice nurse than the GP. At baseline the distribution of the mean number of diabetes related general practice visits was different in the intervention and control groups with the practice nurses providing more clinical care to people with diabetes in the former reflecting different patterns of care in the different practices.

Patient decision aids

The PANDAs decision aid is one of the few decision aids which focus on decision-making in chronic diseases, which take place over several consultations. According to the latest Cochrane Decision Aid Inventory, 10 decision aids have been developed for diabetes.³¹ Four decision aids focus on insulin treatment, of which two are for children, one for adults deciding on premixed insulin and one for insulin initiation in T2DM (PANDAs decision aid). However, unlike PANDAs, none have been developed for making treatment decisions about glycaemic control.

Although decision aids have positive effects on many aspects of the decision-making process, there remains a large gap in the literature on how decision aids fare 'in the real world'. O'Cathain and Thomas³³ conducted a pragmatic trial of a decision aid in a maternity ward and found that health professionals were not making use of the available decision aids, although they reported that they approved of them. The reasons for not using them included 'disagreement' with the available decision aids, lack of resources, perceived patients' reluctance to participate and unwillingness to change their 'routine care'.³³ O'Donnell *et al*³⁴ classified the barriers to the use of decision aids in the clinical situation under three categories—the nature of the decision aid itself, the attitudes of patients and healthcare professionals and organisational barriers such as institutional culture and commitment, time constraint and costing.

A number of authors have proposed various strategies to facilitate such use of decision aids in different clinical settings.³⁵ The effectiveness of these proposed strategies has not yet been formally evaluated. The PANDAs trial however found the decision aid to be highly acceptable to both clinicians and people with diabetes in NHS general practice—a detailed process evaluation of its use can be found elsewhere. This report identifies some of

the key challenges to its widespread implementation in NHS general practice.

However, most studies of decision aids have not shown an increase in the level of satisfaction with the decision-making process or the decision itself. This may be another example of the 'ceiling effect' whereby the satisfaction with the service or consultation was already high before the intervention. It has also been observed that people tend to report satisfaction after they have made the decisions because they tend to 'rationalise' and adapt quickly to uncertain events.³⁶ Moreover, the effect of decision aids on quality of life and health outcomes indicators which are commonly used in health technology assessments, have yet to be proved. More plausible intermediate outcomes, such as concordance with treatment and health service utilisation, could be used as alternative indicators to evaluate the use of decision aids.

General practice is a unique healthcare setting where multidisciplinary teams provide holistic, comprehensive and continuity of care to people in the community. Practitioners usually have an established relationship with their patient and an appreciation of their medical and psychosocial background as well as their associated multimorbid conditions. This puts them in a very good position to advise patients on their treatment options. The use of decision aids to facilitate treatment choices in general practice fits well with the adoption of a Care Planning model for long-term conditions. This model of care, developed by the Diabetes UK Year of Care Programme and recently adopted as a professional standard by the Royal College of General Practitioners (RCGP), is a good way of ensuring that patients with diabetes are both fully informed and fully involved in decisions about their care by supporting their 'empowerment' and facilitating the 'activation' of people with long-term conditions.^{37 38}

Implications for research and clinical practice

For the use of PDAs, such as PANDAs, in routine clinical practice to become the accepted norm, the new GP clinical commissioning groups will need to be aware of the benefits of the use of such aids to ensure that decision aids become a professional standard in, for example, newly commissioned pathways for a long-term condition such as diabetes. Investment will also be necessary for the development and the continuing evaluation of decision aid use, as well as for the training of all members of the multidisciplinary team in the importance and in the practical use of decision aids in primary care. Both the patient's experience and patient/clinician satisfaction with the care received and provided is likely to be much improved if this professional standard is adopted by commissioning groups.

CONCLUSIONS

The use of the PANDAs decision aid by healthcare professionals in usual NHS clinical practice with T2DM patients who are making treatment choices in general

practice improves decision quality by reducing decisional conflict, improving knowledge and promoting realistic expectations but has no demonstrable effect on glycaemic control.

Patient autonomy however is strengthened by the use of the decision aid and longer term clinical outcomes are likely to be improved. A larger trial of the PANDAs decision aid will be necessary to determine if biomedical parameters are improved when the decision aid is used in normal NHS practice.

STRENGTHS AND LIMITATIONS OF THIS STUDY

The study failed to achieve its planned sample size as a result of recruitment difficulties. The reasons for this were the increase in availability of new oral and injectable glucose-lowering drugs (eg, GLP1 agonists, exenatide) which were not available at the start of the project, significant staff changes in 2008/2009 and the reluctance of practices to participate in the study because of a potential H1N1 flu pandemic in summer 2009. As a result each practice was only able to identify 3–5 eligible patients for inclusion in the trial. It proved impossible to secure a funded time-extension to the study and as a result recruitment ceased at 175 participants. This meant that the study was underpowered to detect a difference of 0.5% in HbA1c between the two groups. The original recruitment period was 12 months but because of the problems surrounding recruitment outlined above, recruitment was extended to 20 months. There was also some evidence of inadvertent recruitment bias with 95 participants allocated to the intervention group and 80 to the control group. This is an important and well-recognised consequence of a cluster RCT design and is probably the result of the PANDAs practices being more likely to recruit participants to the trial. There were some differences in baseline characteristics between the intervention and the control and these were included in an analysis which explored how the estimates of the treatment effect changed when baseline differences were controlled for.

Author affiliations

¹Academic Unit of Primary Medical Care, Northern General Hospital, University of Sheffield, Sheffield, UK

²Department of Primary Care Medicine, University of Malaya, Kuala Lumpur, Malaysia

³School of Health and Related Research, University of Sheffield, Sheffield, UK

⁴Centre for Health and Social Care Research, Sheffield Hallam University, Sheffield, UK

Acknowledgements Ethical permission to conduct the study was received from the North Sheffield Local Research Ethics Committee (07/Q2308/53). Expert specialist advice was received from Professor Simon Heller, University of Sheffield. We thank Ms Rachel Dwyer for research support, and Dr Robert Dixon, Sheffield Care Trust, Mr Robert Glendenning and Mr Ian Brown for managerial support. Ms Sharon Hart, University of Sheffield, for administrative support. Members of the PANDAs Advisory Group (Alicia O’Cathain, Hina Kanabar, Hugh McCulloch, Maxine Johnson, Michelle Horspool, Mick Taylor, Sue Beveridge, Mary MacKinnon). Members of the Sheffield Diabetes UK Group. Particular thanks to all those doctors, nurses and people with diabetes

for their contributions without whom it would not, of course, have been possible to undertake the PANDAs trial.

Contributors NM, CJN, MCJ, BC, AB and IB were involved in substantial contribution to conception and design, acquisition of data or analysis and interpretation of data; NM, CJN and MCJ carried out drafting the article or revising it critically for important intellectual content. NM, CJN, MCJ, BC, AB and IB were involved in final approval of the version to be published. NM is the guarantor. This article presents independent research funded by the National Institute for Health Research (NIHR) under its Research for Patient Benefit (RfPB) Programme (Grant Reference Number PB-PG-0906-11248), ISRCTN National Trials Register Number 14842077 and the Sheffield Health and Social Care NHS Foundation Trust. The views expressed are those of the author(s) and not necessarily those of the NHS, the NIHR or the Department of Health.

Funding funded by National Institute for Health Research, Research for Patient Benefit. NM, CJN, MC, BC, IB and AB have support from the University of Sheffield for the submitted work.

Competing interests None.

Provenance and peer review Not commissioned; externally peer reviewed.

Data sharing statement There are no additional data available.

Correction Notice This paper has been corrected since it was first published. A number of typographical errors were missed before publication. These have since been corrected.

REFERENCES

1. Diabetes UK. Diabetes in the UK 2011/2012: Key statistics on diabetes. <http://www.diabetes.org.uk/Documents/Reports/Diabetes-in-the-UK-2011-12.pdf> (accessed 12 Mar 2012).
2. Diabetes.co.uk. Cost of Diabetes. <http://www.diabetes.co.uk/cost-of-diabetes.html> (accessed 12 Mar 2012).
3. National Institute for Health and Clinical Excellence (NICE). *Type 2 diabetes: newer agents*. London: NICE, 2009.
4. UKPDS Group. Intensive blood glucose control with sulphonylureas or insulin compared with conventional treatment and risk of complications in patients with type 2 diabetes (UKPDS 33). *Lancet* 1998;352:837–53.
5. Turner RC, Cull CA, Frighi V, *et al*. Glycemic control with diet, sulphonylurea, metformin, or insulin in patients with type 2 diabetes mellitus: progressive requirement for multiple therapies (UKPDS 49). *JAMA* 1999;281:2005–12.
6. Fitzgerald JT, Vijan S, Stuart N. Insulin therapy and patient attitudes at two VA centers. *Diabetes* 2000;49:A445.
7. Lauritzen T, Scott A. Barrier to insulin therapy in type 2 diabetes: a qualitative focus group research among patients, GPs and diabetologists. *Eur Union Gen Pract Clin J* 2002;3:33–40.
8. Jeavons D, Hungin AP, Cornford CS. Patients with poorly controlled diabetes in primary care: healthcare clinicians’ beliefs and attitudes. *Postgrad Med J* 2006;82:347–50.
9. Paling J. Strategies to help patients understand risks. *BMJ* 2003;27:745–8.
10. Sircwardena AN. Clinical guidelines in primary care: a survey of general practitioners’ attitudes and behaviour. *Br J Gen Pract* 1995;45:643–7.
11. Stacey D, Bennett CL, Barry MJ, *et al*. Decision aids for people facing health treatment or screening decisions. *Cochrane Database Syst Rev*. 2011; CD001431.
12. Colwell B, Mathers N, Ng CJ, *et al*. Improving recruitment to primary care trials: some lessons from the use of modern marketing techniques. Debate and Analysis Paper. *BJGP* 2012;62:496–8. doi: 10.1136/bmjopen-2012-001469
13. Craig P, Dieppe P, Macintyre S, *et al*. Developing and evaluating complex interventions: the new Medical Research Council guidance. *BMJ* 2008;337:979–83.
14. Tversky A, Kahneman D. The framing of decisions and the psychology of choice. *Science* 1981;211:453–8.
15. O’Connor AM, Tugwell P, Wells GA, *et al*. A decision aid for women considering hormone therapy after menopause: decision support framework and evaluation. *Patient Educ Couns* 1998;33:267–79.
16. O’Connor AM. Validation of a decisional conflict scale. *Med Decis Making* 1995;15:25–30.
17. Janis IL, Mann L. *Decision making: a psychological analysis of conflict, choice and commitment*. New York: Free Press, 1977.

Cluster RCT of decision aid to improve decision quality in people with diabetes

18. Degner LF, Sloan JA, Venkatesh P. The Control Preferences Scale. *Can J Nurs Res* 1997;29:21–43.
19. Davidson BJ, Degner LF, Morgan TR. Information and decision making preferences of men with prostate cancer. *Oncol Nurs Forum* 1995;22:1401–8.
20. Kremer H, Ironson G. Measuring the involvement of people with HIV in treatment decision making using the Control Preference Scale. *Med Decis Making* 2008;28:899–908.
21. Brehaut JC, O'Connor AM, Wood TJ, *et al.* Validation of a decision regret scale. *Med Decis Making* 2003;23:281–92.
22. Kinmonth AL, Woodcock A, Griffin S, *et al.* Randomised controlled trial of patient centred care of diabetes in general practice: impact on current wellbeing and future disease risk. *BMJ* 1998;317:1202–8.
23. DAFNE Study Group. Training in flexible, intensive insulin management to enable dietary freedom in people with type 1 diabetes: dose adjustment for normal eating (DAFNE) randomized controlled trial. *BMJ* 2002;325:746–51.
24. Campbell MK, Elbourne DR, Altman DG for the CONSORT Group. CONSORT statement: extension to cluster randomised trials. *BMJ* 2004;328:702–8.
25. Elwyn G, O'Connor A, Stacey D, *et al.* International Patient Decision Aids Standards (IPDAS) Collaboration. Developing a quality criteria framework for patient decision aid: online international Delphi consensus process. *BMJ* 2006;333:417–19.
26. Légaré F, O'Connor AM, Graham ID, *et al.* Primary health care professionals' views on barriers and facilitators to the implementation of the Ottawa Decision Support Framework in practice. *Patient Educ Couns* 2006;63:380–90.
27. Karter AJ, Subramanian U, Saha C, *et al.* Barriers to insulin initiation: the translating research into action for diabetes insulin starts project. *Diabetes Care* 2010;33:733–5.
28. Larkin ME, Capasso VA, Chen CL, *et al.* Measuring psychological insulin resistance: barriers to insulin use. *Diabetes Educ* 2008;34:511–17.
29. Auvinen A, Vornanen T, Tammela TL, *et al.* A randomized trial of the choice of treatment in prostate cancer: design and baseline characteristics. *BJU Int* 2001;88:708–15.
30. Murray E, Davis H, Tai SS, *et al.* Randomised controlled trial of an interactive multimedia decision aid on benign prostatic hypertrophy in primary care. *BMJ* 2001;323:493–6.
31. Cochrane Library. Cochrane Inventory of Patient Decision Aids. <http://decisionaid.ohri.ca/cochinvent.php> (accessed 12 Mar 2012).
32. Bradley A, Brown I, Ng CJ, *et al.* Decision aids in patients with type 2 diabetes considering treatment options: qualitative analysis of consultations and interviews from the PANDAs study. *Diabet Med* 2011;2(S1):118.
33. O'Cathain A, Thomas KJ. Evaluating decision aids—where next? *Health Expect* 2004;7:98–103.
34. O'Donnell S, Cranney A, Jacobsen MJ, *et al.* Understanding and overcoming the barriers of implementing patient decision aids in clinical practice. *J Eval Clin Practice* 2006;12:174–81.
35. O'Connor AM, Wennberg JE, Legare F, *et al.* Toward the 'tipping point': decision aids and informed patient choice. *Health Aff (Millwood)* 2007;26:716–25.
36. O'Connor AM, Bennett CL, Stacey D, *et al.* Decision aids for people facing health treatment or screening decisions. *Cochrane Database Syst Rev* 2009;(3). CD001431.
37. Wagner EH. Chronic disease management: what will it take to improve care for chronic illness? *Eff Clin Pract* 1998;1:2–4.
38. Mathers N, Roberts S, Hodkinson I, *et al.* *Care planning: improving the lives of people with long term conditions*. UK: Royal College of General Practitioners, 2011.

BMJ Open

Clinical effectiveness of a patient decision aid to improve decision quality and glycaemic control in people with diabetes making treatment choices: a cluster randomised controlled trial (PANDAs) in general practice

Nigel Mathers, Chirk Jenn Ng, Michael Joseph Campbell, et al.

BMJ Open 2012 2:

doi: 10.1136/bmjopen-2012-001469

Updated information and services can be found at:

<http://bmjopen.bmj.com/content/2/6/e001469.full.html>

These include:

- | | |
|-------------------------------|---|
| References | This article cites 30 articles, 14 of which can be accessed free at:
http://bmjopen.bmj.com/content/2/6/e001469.full.html#ref-list-1 |
| Open Access | This is an open-access article distributed under the terms of the Creative Commons Attribution Non-commercial License, which permits use, distribution, and reproduction in any medium, provided the original work is properly cited, the use is non commercial and is otherwise in compliance with the license. See:
http://creativecommons.org/licenses/by-nc/2.0/ and
http://creativecommons.org/licenses/by-nc/2.0/legalcode . |
| Email alerting service | Receive free email alerts when new articles cite this article. Sign up in the box at the top right corner of the online article. |

-
- | | |
|--------------------------|---|
| Topic Collections | Articles on similar topics can be found in the following collections
Diabetes and Endocrinology (117 articles)
General practice / Family practice (185 articles)
Patient-centred medicine (115 articles) |
|--------------------------|---|

To request permissions go to:

<http://group.bmj.com/group/rights-licensing/permissions>

To order reprints go to:

<http://journals.bmj.com/cgi/reprintform>

To subscribe to BMJ go to:

<http://group.bmj.com/subscribe/>

Notes

To request permissions go to:
<http://group.bmj.com/group/rights-licensing/permissions>

To order reprints go to:
<http://journals.bmj.com/cgi/reprintform>

To subscribe to BMJ go to:
<http://group.bmj.com/subscribe/>